

Instrument Summary:

Instrument ID: iCAP Q
Serial Number: Undefined

Labbook Summary:

Path and filename: _Application Data\Workspace\LabBooks\wlw\20210826-1.imexp
Labbook created by: Administrator
Based on template:
Hardware configuration: iCAPQ1
Labbook type: eQuant
Qtegra version (last saved): 2.7.2425.154
Labbook started: 8/26/2021 5:02:31 PM
Labbook finished: 8/26/2021 5:50:36 PM

Method Summary:

Isotope	Mode	Dwell time (s)	# of Channels	Spacing	Resolution	IS
9Be (KED)	KED	0.03	3	0.1	Normal	
11B (KED)	KED	0.03	3	0.1	Normal	
23Na (KED)	KED	0.03	3	0.1	Normal	
24Mg (KED)	KED	0.03	3	0.1	Normal	
27Al (KED)	KED	0.03	3	0.1	Normal	
39K (KED)	KED	0.03	3	0.1	Normal	
40Ca (KED)	KED	0.03	3	0.1	Normal	
51V (KED)	KED	0.03	3	0.1	Normal	
52Cr (KED)	KED	0.03	3	0.1	Normal	
55Mn (KED)	KED	0.03	3	0.1	Normal	
56Fe (KED)	KED	0.03	3	0.1	Normal	
58Ni (KED)	KED	0.03	3	0.1	Normal	
59Co (KED)	KED	0.03	3	0.1	Normal	
63Cu (KED)	KED	0.03	3	0.1	Normal	
64Zn (KED)	KED	0.03	3	0.1	Normal	
69Ga (KED)	KED	0.03	3	0.1	Normal	
75As (KED)	KED	0.03	3	0.1	Normal	
80Se (KED)	KED	0.03	3	0.1	Normal	
85Rb (KED)	KED	0.03	3	0.1	Normal	
88Sr (KED)	KED	0.03	3	0.1	Normal	
107Ag (KED)	KED	0.03	3	0.1	Normal	
114Cd (KED)	KED	0.03	3	0.1	Normal	
133Cs (KED)	KED	0.03	3	0.1	Normal	
138Ba (KED)	KED	0.03	3	0.1	Normal	
139La (KED)	KED	0.03	3	0.1	Normal	
140Ce (KED)	KED	0.03	3	0.1	Normal	
141Pr (KED)	KED	0.03	3	0.1	Normal	
142Nd (KED)	KED	0.03	3	0.1	Normal	
152Sm (KED)	KED	0.03	3	0.1	Normal	
153Eu (KED)	KED	0.03	3	0.1	Normal	
158Gd (KED)	KED	0.03	3	0.1	Normal	
164Dy (KED)	KED	0.03	3	0.1	Normal	
165Ho (KED)	KED	0.03	3	0.1	Normal	
166Er (KED)	KED	0.03	3	0.1	Normal	
169Tm (KED)	KED	0.03	3	0.1	Normal	
174Yb (KED)	KED	0.03	3	0.1	Normal	
175Lu (KED)	KED	0.03	3	0.1	Normal	
205Tl (KED)	KED	0.03	3	0.1	Normal	
208Pb (KED)	KED	0.03	3	0.1	Normal	
232Th (KED)	KED	0.03	3	0.1	Normal	
238U (KED)	KED	0.03	3	0.1	Normal	

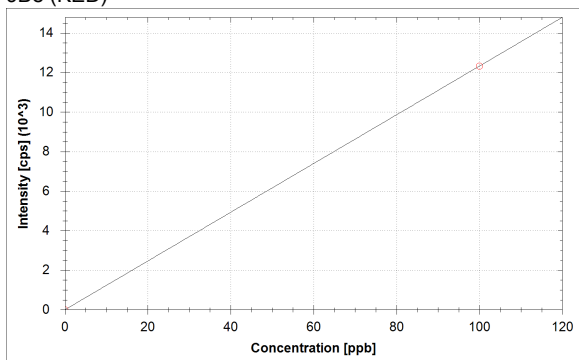
Isotope	Mode	Dwell time (s)	# of Channels	Spacing	Resolution
9Be (KED)	KED	0.03	3	0.1	Normal
11B (KED)	KED	0.03	3	0.1	Normal
23Na (KED)	KED	0.03	3	0.1	Normal
24Mg (KED)	KED	0.03	3	0.1	Normal
27Al (KED)	KED	0.03	3	0.1	Normal
39K (KED)	KED	0.03	3	0.1	Normal
40Ca (KED)	KED	0.03	3	0.1	Normal
51V (KED)	KED	0.03	3	0.1	Normal
52Cr (KED)	KED	0.03	3	0.1	Normal
55Mn (KED)	KED	0.03	3	0.1	Normal
56Fe (KED)	KED	0.03	3	0.1	Normal
58Ni (KED)	KED	0.03	3	0.1	Normal
59Co (KED)	KED	0.03	3	0.1	Normal
63Cu (KED)	KED	0.03	3	0.1	Normal

Isotope	Mode	Dwell time (s)	# of Channels	Spacing	Resolution
64Zn (KED)	KED	0.03	3	0.1	Normal
69Ga (KED)	KED	0.03	3	0.1	Normal
75As (KED)	KED	0.03	3	0.1	Normal
80Se (KED)	KED	0.03	3	0.1	Normal
85Rb (KED)	KED	0.03	3	0.1	Normal
88Sr (KED)	KED	0.03	3	0.1	Normal
107Ag (KED)	KED	0.03	3	0.1	Normal
114Cd (KED)	KED	0.03	3	0.1	Normal
133Cs (KED)	KED	0.03	3	0.1	Normal
138Ba (KED)	KED	0.03	3	0.1	Normal
139La (KED)	KED	0.03	3	0.1	Normal
140Ce (KED)	KED	0.03	3	0.1	Normal
141Pr (KED)	KED	0.03	3	0.1	Normal
142Nd (KED)	KED	0.03	3	0.1	Normal
152Sm (KED)	KED	0.03	3	0.1	Normal
153Eu (KED)	KED	0.03	3	0.1	Normal
158Gd (KED)	KED	0.03	3	0.1	Normal
164Dy (KED)	KED	0.03	3	0.1	Normal
165Ho (KED)	KED	0.03	3	0.1	Normal
166Er (KED)	KED	0.03	3	0.1	Normal
169Tm (KED)	KED	0.03	3	0.1	Normal
174Yb (KED)	KED	0.03	3	0.1	Normal
175Lu (KED)	KED	0.03	3	0.1	Normal
205Tl (KED)	KED	0.03	3	0.1	Normal
208Pb (KED)	KED	0.03	3	0.1	Normal
232Th (KED)	KED	0.03	3	0.1	Normal
238U (KED)	KED	0.03	3	0.1	Normal

No. of sweeps	Time per sweep[s]	Time per main run[s]
10	3.69	36.9

Calibration Curves:

9Be (KED)



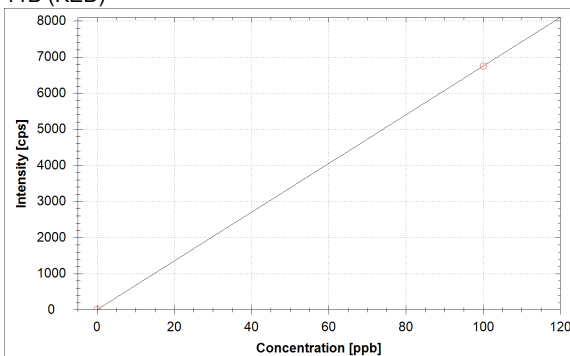
$$f(x) = 123.2608 \cdot x$$

$$R^2 = 1.0000$$

$$\text{BEC} = 0.000 \text{ ppb}$$

$$\text{LoD} = \text{N/A}$$

11B (KED)



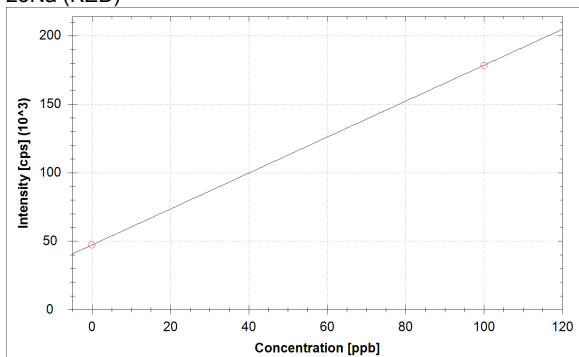
$$f(x) = 67.4516 \cdot x + 3.3333$$

$$R^2 = 1.0000$$

$$\text{BEC} = 0.049 \text{ ppb}$$

$$\text{LoD} = \text{N/A}$$

23Na (KED)



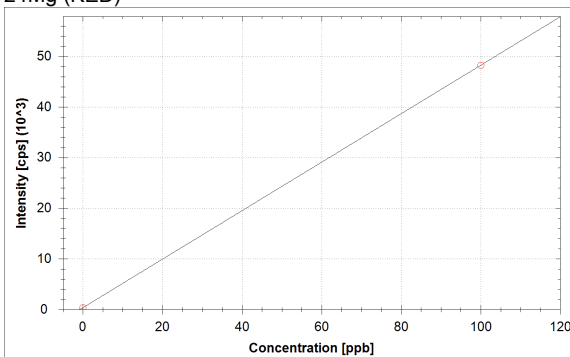
$$f(x) = 1312.1627 \cdot x + 47188.9875$$

$$R^2 = 1.0000$$

$$\text{BEC} = 35.963 \text{ ppb}$$

$$\text{LoD} = \text{N/A}$$

24Mg (KED)



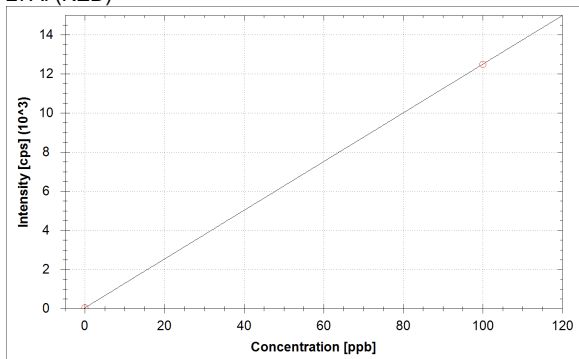
$$f(x) = 478.6649 \cdot x + 370.0058$$

$$R^2 = 1.0000$$

$$\text{BEC} = 0.773 \text{ ppb}$$

$$\text{LoD} = \text{N/A}$$

27Al (KED)



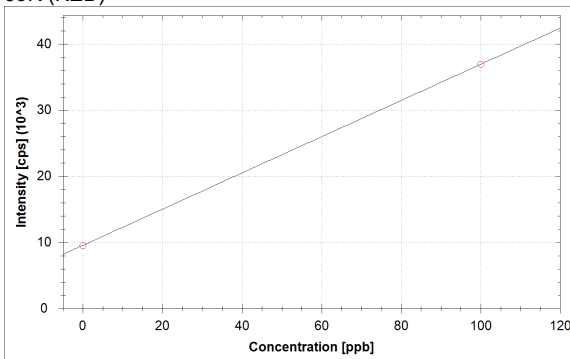
$$f(x) = 124.4962 \cdot x + 40.0001$$

$$R^2 = 1.0000$$

$$\text{BEC} = 0.321 \text{ ppb}$$

$$\text{LoD} = \text{N/A}$$

39K (KED)



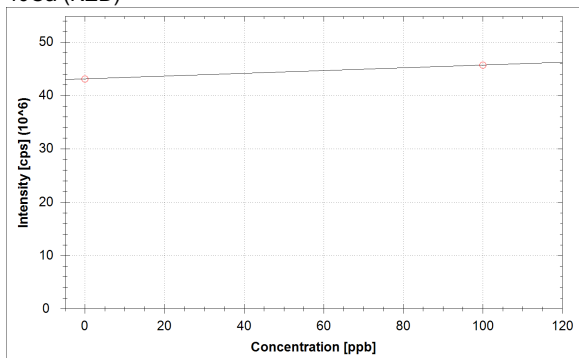
$$f(x) = 273.8758 \cdot x + 9553.6672$$

$$R^2 = 1.0000$$

$$\text{BEC} = 34.883 \text{ ppb}$$

$$\text{LoD} = \text{N/A}$$

40Ca (KED)



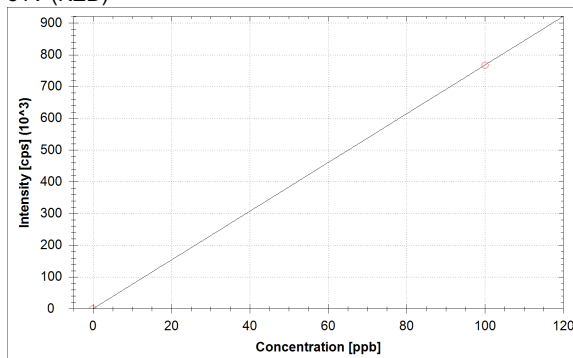
$$f(x) = 25880.6031 \cdot x + 43104725.9707$$

$$R^2 = 1.0000$$

$$\text{BEC} = 1665.522 \text{ ppb}$$

$$\text{LoD} = \text{N/A}$$

51V (KED)



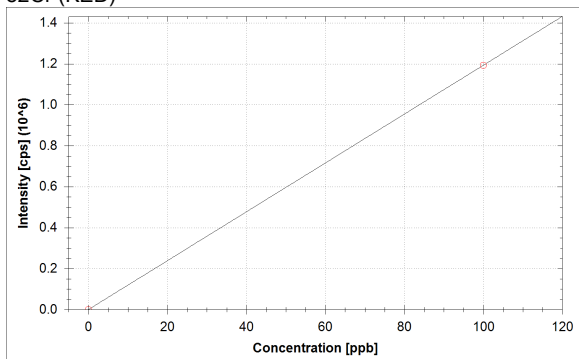
$$f(x) = 7674.7444 \cdot x + 13.3334$$

$$R^2 = 1.0000$$

$$\text{BEC} = 0.002 \text{ ppb}$$

$$\text{LoD} = \text{N/A}$$

52Cr (KED)



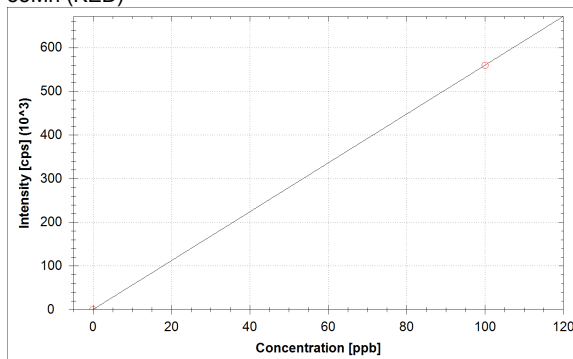
$$f(x) = 11931.2609 \cdot x + 96.6673$$

$$R^2 = 1.0000$$

$$\text{BEC} = 0.008 \text{ ppb}$$

$$\text{LoD} = \text{N/A}$$

55Mn (KED)



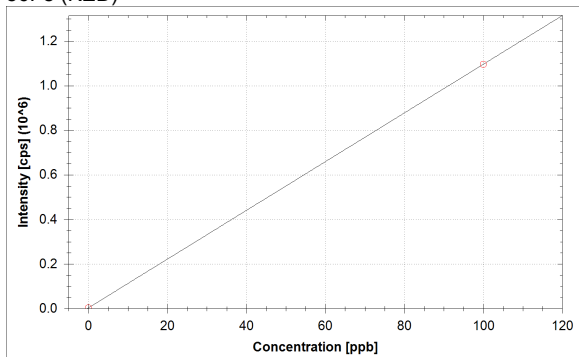
$$f(x) = 5595.6865 \cdot x + 113.3339$$

$$R^2 = 1.0000$$

$$\text{BEC} = 0.020 \text{ ppb}$$

$$\text{LoD} = \text{N/A}$$

56Fe (KED)



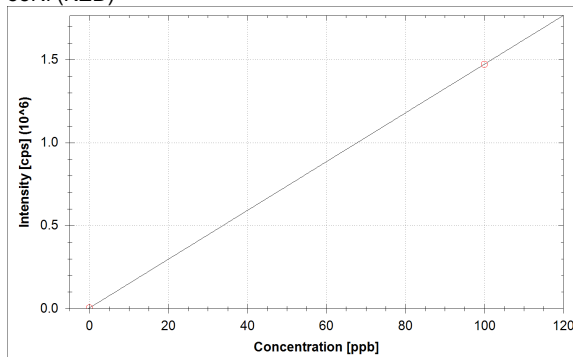
$$f(x) = 10929.8663 \cdot x + 3317.1118$$

$$R^2 = 1.0000$$

$$\text{BEC} = 0.303 \text{ ppb}$$

$$\text{LoD} = \text{N/A}$$

58Ni (KED)



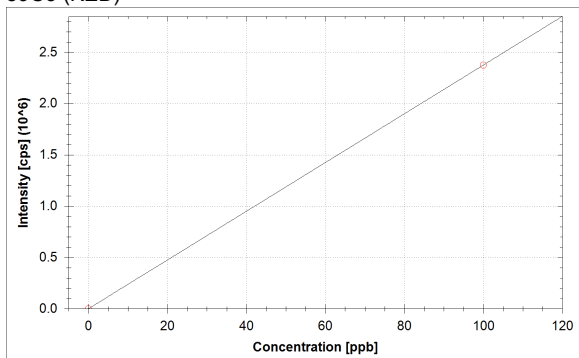
$$f(x) = 14684.9720 \cdot x + 3797.2523$$

$$R^2 = 1.0000$$

$$\text{BEC} = 0.259 \text{ ppb}$$

$$\text{LoD} = \text{N/A}$$

59Co (KED)



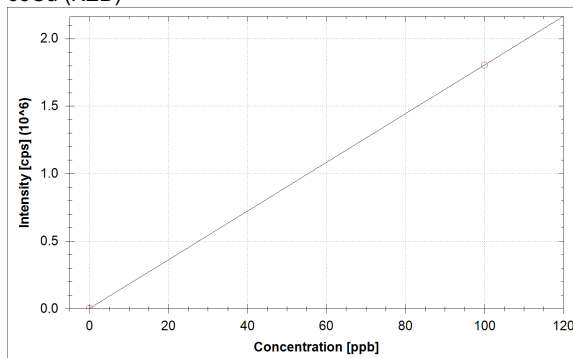
$$f(x) = 23751.0434 \cdot x + 16.6667$$

$$R^2 = 1.0000$$

$$\text{BEC} = 0.001 \text{ ppb}$$

$$\text{LoD} = \text{N/A}$$

63Cu (KED)



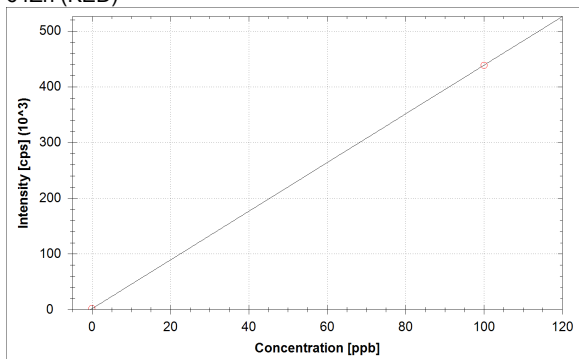
$$f(x) = 18017.4779 \cdot x + 1740.1254$$

$$R^2 = 1.0000$$

$$\text{BEC} = 0.097 \text{ ppb}$$

$$\text{LoD} = \text{N/A}$$

64Zn (KED)



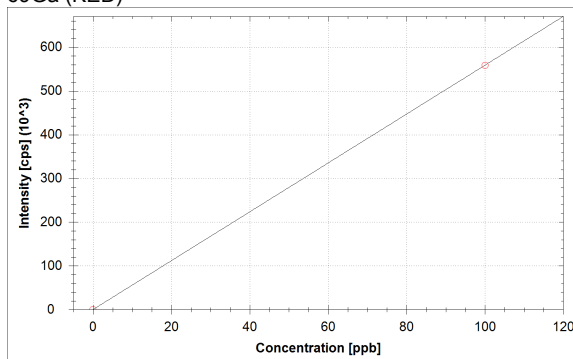
$$f(x) = 4369.6347 \cdot x + 1603.4373$$

$$R^2 = 1.0000$$

$$\text{BEC} = 0.367 \text{ ppb}$$

$$\text{LoD} = \text{N/A}$$

69Ga (KED)



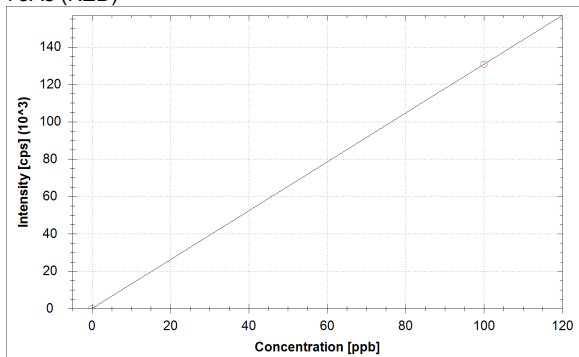
$$f(x) = 5586.0876 \cdot x + 80.0003$$

$$R^2 = 1.0000$$

$$\text{BEC} = 0.014 \text{ ppb}$$

$$\text{LoD} = \text{N/A}$$

75As (KED)



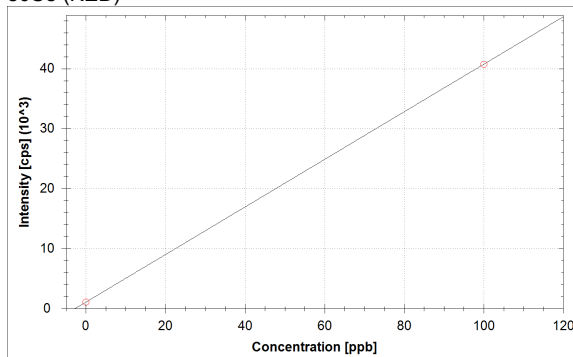
$$f(x) = 1307.3096 \cdot x + 23.3334$$

$$R^2 = 1.0000$$

$$\text{BEC} = 0.018 \text{ ppb}$$

$$\text{LoD} = \text{N/A}$$

80Se (KED)



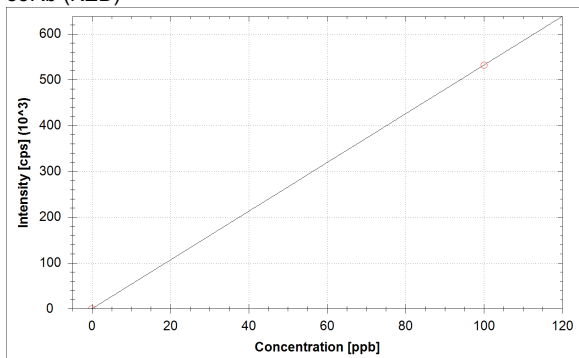
$$f(x) = 396.5637 \cdot x + 1066.7124$$

$$R^2 = 1.0000$$

$$\text{BEC} = 2.690 \text{ ppb}$$

$$\text{LoD} = \text{N/A}$$

85Rb (KED)



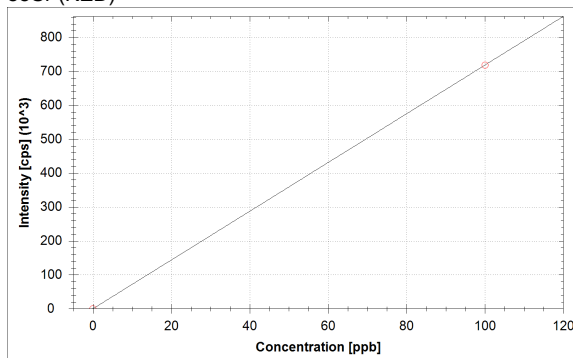
$$f(x) = 5318.1464 \cdot x + 96.6672$$

$$R^2 = 1.0000$$

$$\text{BEC} = 0.018 \text{ ppb}$$

$$\text{LoD} = \text{N/A}$$

88Sr (KED)



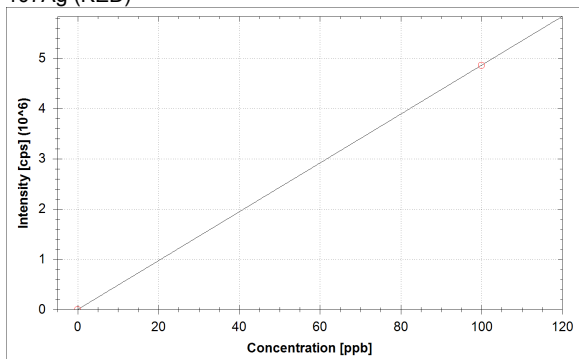
$$f(x) = 7182.1846 \cdot x + 156.6678$$

$$R^2 = 1.0000$$

$$\text{BEC} = 0.022 \text{ ppb}$$

$$\text{LoD} = \text{N/A}$$

107Ag (KED)



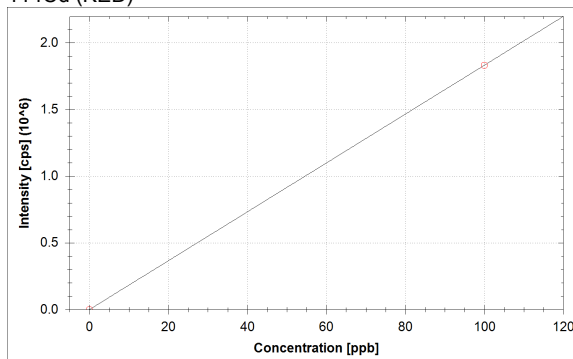
$$f(x) = 48623.8874 \cdot x + 86.6670$$

$$R^2 = 1.0000$$

$$\text{BEC} = 0.002 \text{ ppb}$$

$$\text{LoD} = \text{N/A}$$

114Cd (KED)



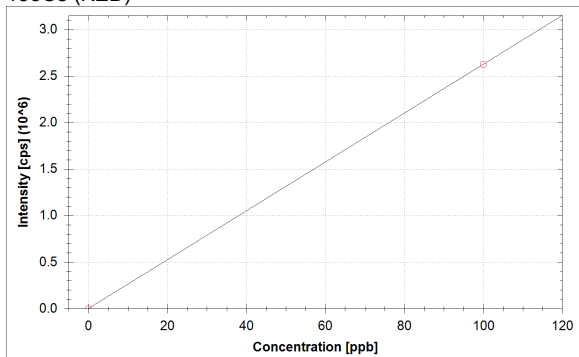
$$f(x) = 18313.9360 \cdot x + 13.3334$$

$$R^2 = 1.0000$$

$$\text{BEC} = 0.001 \text{ ppb}$$

$$\text{LoD} = \text{N/A}$$

133Cs (KED)



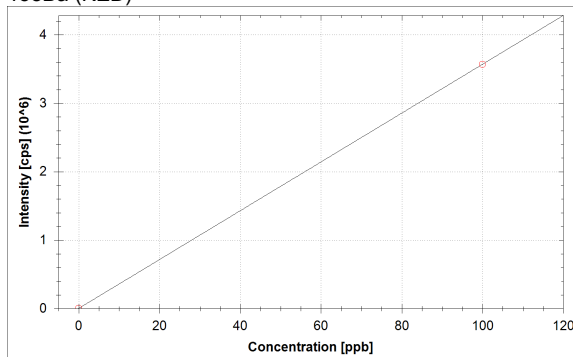
$$f(x) = 26260.7895 \cdot x + 46.6668$$

$$R^2 = 1.0000$$

$$\text{BEC} = 0.002 \text{ ppb}$$

$$\text{LoD} = \text{N/A}$$

138Ba (KED)



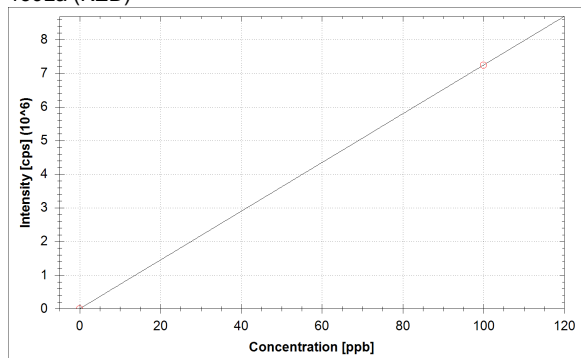
$$f(x) = 35685.6032 \cdot x + 1733.4544$$

$$R^2 = 1.0000$$

$$\text{BEC} = 0.049 \text{ ppb}$$

$$\text{LoD} = \text{N/A}$$

139La (KED)



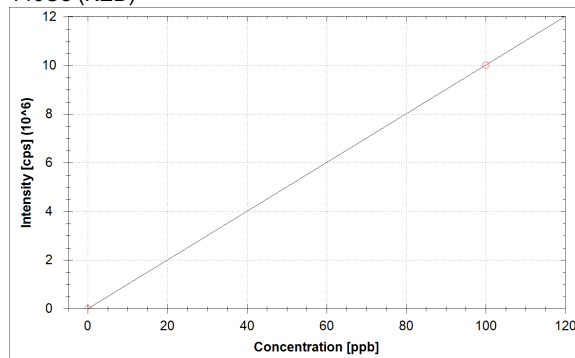
$$f(x) = 72429.1297 \cdot x + 16.6667$$

$$R^2 = 1.0000$$

$$\text{BEC} = 0.000 \text{ ppb}$$

$$\text{LoD} = \text{N/A}$$

140Ce (KED)



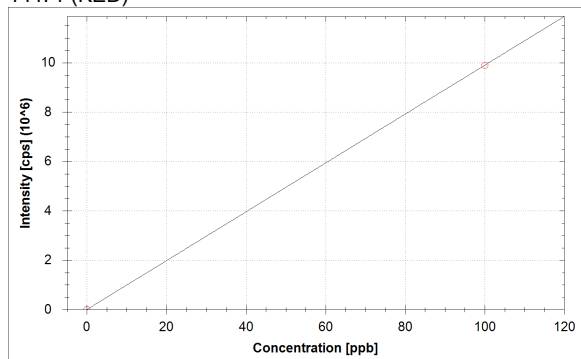
$$f(x) = 100173.4357 \cdot x + 96.6672$$

$$R^2 = 1.0000$$

$$\text{BEC} = 0.001 \text{ ppb}$$

$$\text{LoD} = \text{N/A}$$

141Pr (KED)



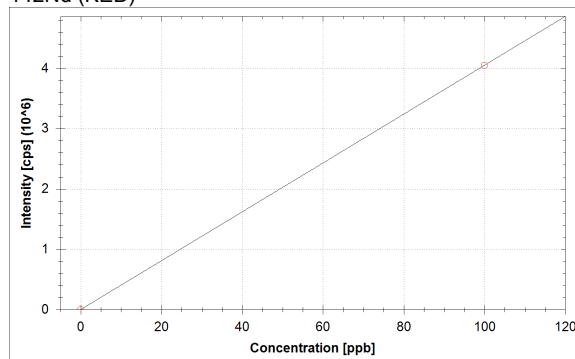
$$f(x) = 98983.5221 \cdot x + 3.3333$$

$$R^2 = 1.0000$$

$$\text{BEC} = 0.000 \text{ ppb}$$

$$\text{LoD} = \text{N/A}$$

142Nd (KED)



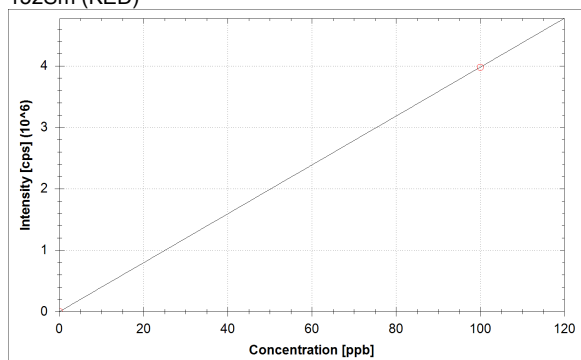
$$f(x) = 40507.3525 \cdot x + 13.3334$$

$$R^2 = 1.0000$$

$$\text{BEC} = 0.000 \text{ ppb}$$

$$\text{LoD} = \text{N/A}$$

152Sm (KED)



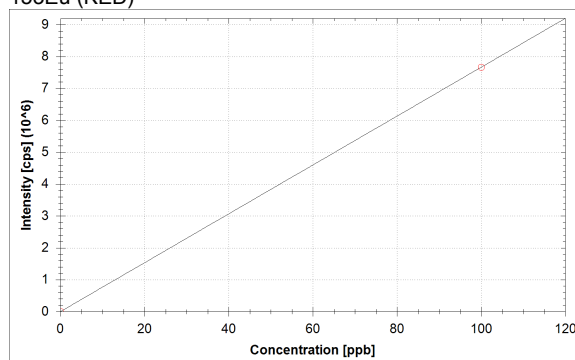
$$f(x) = 39773.5558 \cdot x$$

$$R^2 = 1.0000$$

$$\text{BEC} = 0.000 \text{ ppb}$$

$$\text{LoD} = \text{N/A}$$

153Eu (KED)



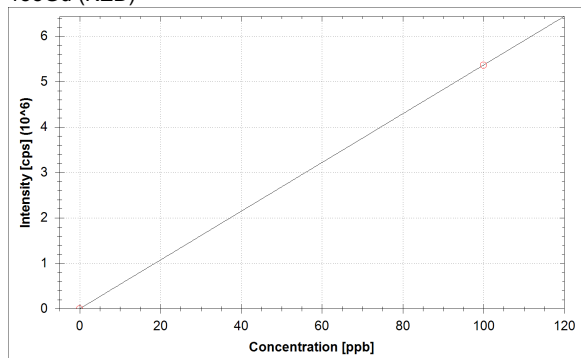
$$f(x) = 76632.2046 \cdot x$$

$$R^2 = 1.0000$$

$$\text{BEC} = 0.000 \text{ ppb}$$

$$\text{LoD} = \text{N/A}$$

158Gd (KED)



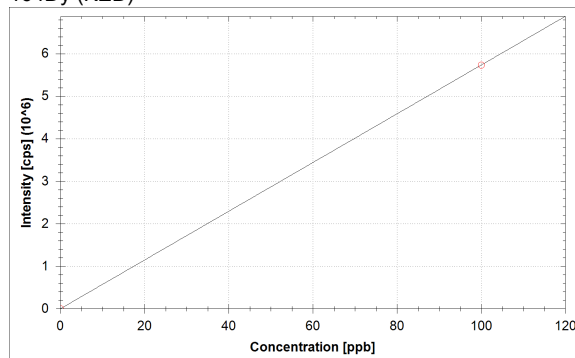
$$f(x) = 53646.1413 \cdot x + 3.3333$$

$$R^2 = 1.0000$$

$$\text{BEC} = 0.000 \text{ ppb}$$

$$\text{LoD} = \text{N/A}$$

164Dy (KED)



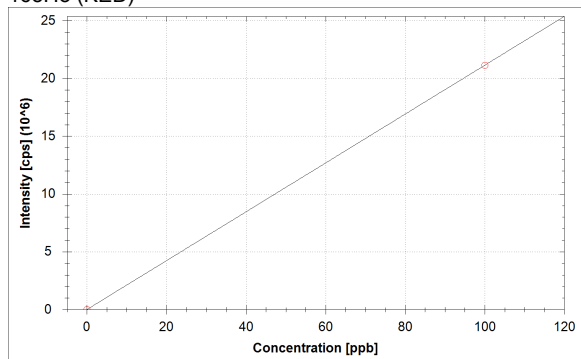
$$f(x) = 57322.5879 \cdot x$$

$$R^2 = 1.0000$$

$$\text{BEC} = 0.000 \text{ ppb}$$

$$\text{LoD} = \text{N/A}$$

165Ho (KED)



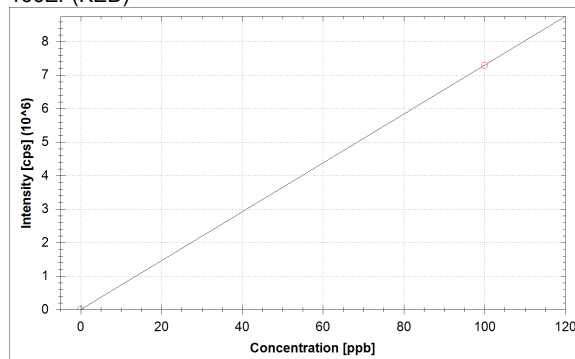
$$f(x) = 211372.0323 \cdot x + 10.0000$$

$$R^2 = 1.0000$$

$$\text{BEC} = 0.000 \text{ ppb}$$

$$\text{LoD} = \text{N/A}$$

166Er (KED)



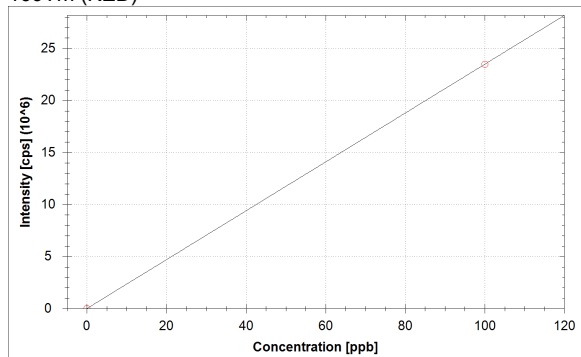
$$f(x) = 72960.0625 \cdot x + 16.6667$$

$$R^2 = 1.0000$$

$$\text{BEC} = 0.000 \text{ ppb}$$

$$\text{LoD} = \text{N/A}$$

169Tm (KED)



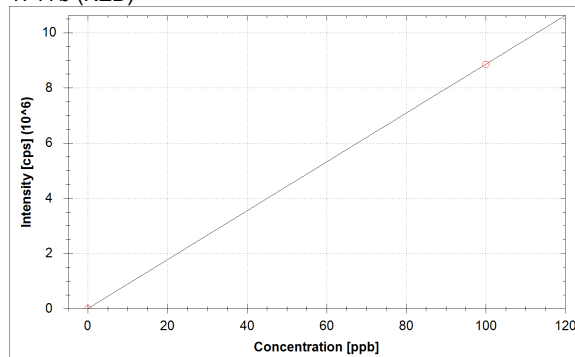
$$f(x) = 234714.3242 \cdot x + 3.3333$$

$$R^2 = 1.0000$$

$$\text{BEC} = 0.000 \text{ ppb}$$

$$\text{LoD} = \text{N/A}$$

174Yb (KED)



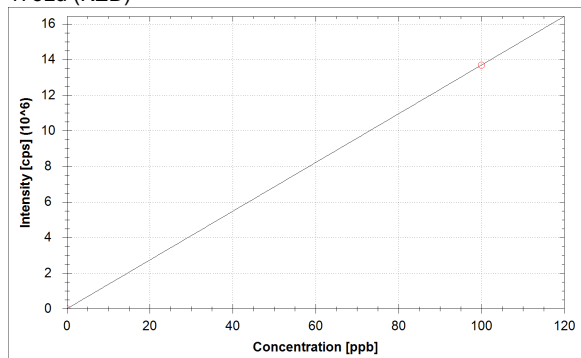
$$f(x) = 88521.3443 \cdot x + 3.3333$$

$$R^2 = 1.0000$$

$$\text{BEC} = 0.000 \text{ ppb}$$

$$\text{LoD} = \text{N/A}$$

175Lu (KED)



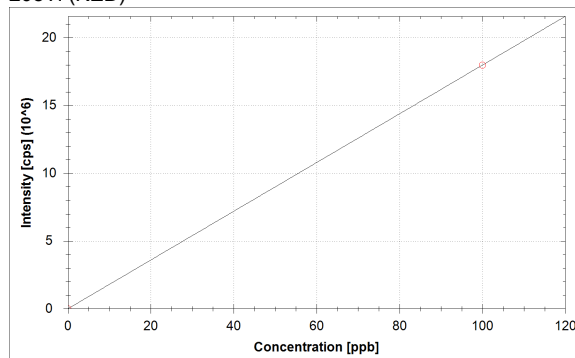
$$f(x) = 136877.6923 \cdot x$$

$$R^2 = 1.0000$$

$$\text{BEC} = 0.000 \text{ ppb}$$

$$\text{LoD} = \text{N/A}$$

205Tl (KED)



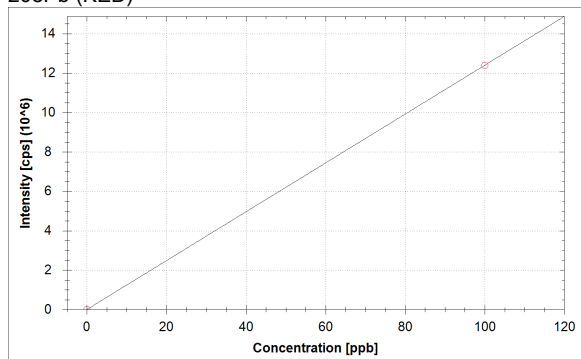
$$f(x) = 179803.8872 \cdot x$$

$$R^2 = 1.0000$$

$$\text{BEC} = 0.000 \text{ ppb}$$

$$\text{LoD} = \text{N/A}$$

208Pb (KED)



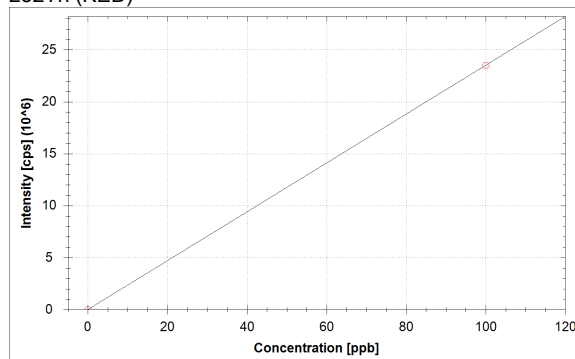
$$f(x) = 123941.9536 \cdot x + 3180.4081$$

$$R^2 = 1.0000$$

$$\text{BEC} = 0.026 \text{ ppb}$$

$$\text{LoD} = \text{N/A}$$

232Th (KED)



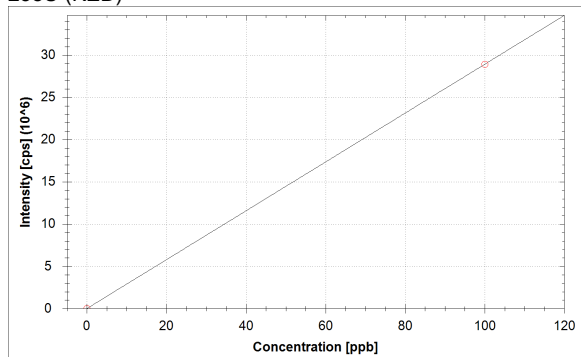
$$f(x) = 235140.1708 \cdot x + 523.3455$$

$$R^2 = 1.0000$$

$$\text{BEC} = 0.002 \text{ ppb}$$

$$\text{LoD} = \text{N/A}$$

238U (KED)



$$f(x) = 289131.3059 \cdot x + 100.0006$$

$$R^2 = 1.0000$$

$$\text{BEC} = 0.000 \text{ ppb}$$

$$\text{LoD} = \text{N/A}$$

Standards:

Analysis Index: 3
 Analysis Name: std1
 Analysis Type: STD
 Analysis Started at: 8/26/2021 5:08:05 PM
 Standard (Stock): std1
 Standard DF: 1

Category	Concentration average	Concentration RSD	Standard Concentration
9Be (KED)	100.000 ppb		100.000 ppb
11B (KED)	100.000 ppb		100.000 ppb
23Na (KED)	100.000 ppb		100.000 ppb
24Mg (KED)	100.000 ppb		100.000 ppb
27Al (KED)	100.000 ppb		100.000 ppb
39K (KED)	100.000 ppb		100.000 ppb
40Ca (KED)	100.000 ppb		100.000 ppb
51V (KED)	100.000 ppb		100.000 ppb
52Cr (KED)	100.000 ppb		100.000 ppb
55Mn (KED)	100.000 ppb		100.000 ppb
56Fe (KED)	100.000 ppb		100.000 ppb
58Ni (KED)	100.000 ppb		100.000 ppb
59Co (KED)	100.000 ppb		100.000 ppb
63Cu (KED)	100.000 ppb		100.000 ppb
64Zn (KED)	100.000 ppb		100.000 ppb
69Ga (KED)	100.000 ppb		100.000 ppb
75As (KED)	100.000 ppb		100.000 ppb
80Se (KED)	100.000 ppb		100.000 ppb
85Rb (KED)	100.000 ppb		100.000 ppb
88Sr (KED)	100.000 ppb		100.000 ppb
107Ag (KED)	100.000 ppb		100.000 ppb
114Cd (KED)	100.000 ppb		100.000 ppb
133Cs (KED)	100.000 ppb		100.000 ppb
138Ba (KED)	100.000 ppb		100.000 ppb
139La (KED)	100.000 ppb		100.000 ppb
140Ce (KED)	100.000 ppb		100.000 ppb
141Pr (KED)	100.000 ppb		100.000 ppb
142Nd (KED)	100.000 ppb		100.000 ppb
152Sm (KED)	100.000 ppb		100.000 ppb
153Eu (KED)	100.000 ppb		100.000 ppb
158Gd (KED)	100.000 ppb		100.000 ppb
164Dy (KED)	100.000 ppb		100.000 ppb
165Ho (KED)	100.000 ppb		100.000 ppb
166Er (KED)	100.000 ppb		100.000 ppb
169Tm (KED)	100.000 ppb		100.000 ppb
174Yb (KED)	100.000 ppb		100.000 ppb
175Lu (KED)	100.000 ppb		100.000 ppb
205Tl (KED)	100.000 ppb		100.000 ppb
208Pb (KED)	100.000 ppb		100.000 ppb
232Th (KED)	100.000 ppb		100.000 ppb
238U (KED)	100.000 ppb		100.000 ppb

Sample List Summary:

Instrument ID: iCAP Q

Index:	Label:	Main Runs:	Survey Runs:	Start Time:	User name:
1	water	3	0	8/26/2021 5:02:34 PM	WINDOWS-UPCI4ER\Administrator
2	blk	1	0	8/26/2021 5:05:44 PM	WINDOWS-UPCI4ER\Administrator
3	std1	1	0	8/26/2021 5:08:05 PM	WINDOWS-UPCI4ER\Administrator
4	179407jian	1	0	8/26/2021 5:09:57 PM	WINDOWS-UPCI4ER\Administrator
5	051920jian	1	0	8/26/2021 5:12:08 PM	WINDOWS-UPCI4ER\Administrator
6	179466jian	1	0	8/26/2021 5:14:10 PM	WINDOWS-UPCI4ER\Administrator
7	179422jian	1	0	8/26/2021 5:16:03 PM	WINDOWS-UPCI4ER\Administrator
8	046281jian	1	0	8/26/2021 5:17:59 PM	WINDOWS-UPCI4ER\Administrator
9	1602126jian	1	0	8/26/2021 5:19:56 PM	WINDOWS-UPCI4ER\Administrator
10	1602611jian	1	0	8/26/2021 5:21:52 PM	WINDOWS-UPCI4ER\Administrator
11	1601422jian	1	0	8/26/2021 5:23:53 PM	WINDOWS-UPCI4ER\Administrator
12	1601242jian	1	0	8/26/2021 5:25:59 PM	WINDOWS-UPCI4ER\Administrator
13	1602168jian	1	0	8/26/2021 5:28:04 PM	WINDOWS-UPCI4ER\Administrator
14	1602088jian	1	0	8/26/2021 5:30:04 PM	WINDOWS-UPCI4ER\Administrator
15	1603041jian	1	0	8/26/2021 5:32:03 PM	WINDOWS-UPCI4ER\Administrator
16	1602166jian	1	0	8/26/2021 5:34:06 PM	WINDOWS-UPCI4ER\Administrator
17	1602152jian	1	0	8/26/2021 5:36:12 PM	WINDOWS-UPCI4ER\Administrator
18	1602201jian	1	0	8/26/2021 5:38:13 PM	WINDOWS-UPCI4ER\Administrator
19	1602639jian	1	0	8/26/2021 5:40:10 PM	WINDOWS-UPCI4ER\Administrator
20	16014jian	1	0	8/26/2021 5:42:14 PM	WINDOWS-UPCI4ER\Administrator
21	16001jian	1	0	8/26/2021 5:44:17 PM	WINDOWS-UPCI4ER\Administrator
22	1702121jian	1	0	8/26/2021 5:46:28 PM	WINDOWS-UPCI4ER\Administrator
23	1701274jian	1	0	8/26/2021 5:48:31 PM	WINDOWS-UPCI4ER\Administrator

Sample Summary

Instrument ID: iCAP Q

Analysis index: 1

Analysis name: water

Analysis started at: 8/26/2021 5:02:34 PM

User name: WINDOWS-UPCI4ER\Administrator

Category	Concentration average	Concentration RSD
9Be (KED)	0.000 ppb	
11B (KED)	0.066 ppb	173.2 %
23Na (KED)	-27.917 ppb	0.8 %
24Mg (KED)	-0.682 ppb	2.0 %
27Al (KED)	-0.295 ppb	0.0 %
39K (KED)	-20.182 ppb	0.5 %
40Ca (KED)	309.246 ppb	23.1 %
51V (KED)	-0.001 ppb	173.2 %
52Cr (KED)	-0.006 ppb	11.4 %
55Mn (KED)	-0.013 ppb	18.2 %
56Fe (KED)	-0.265 ppb	1.3 %
58Ni (KED)	-0.099 ppb	6.1 %
59Co (KED)	-0.001 ppb	13.3 %
63Cu (KED)	-0.088 ppb	2.4 %
64Zn (KED)	-0.268 ppb	1.9 %
69Ga (KED)	-0.011 ppb	13.5 %
75As (KED)	-0.014 ppb	10.8 %
80Se (KED)	-0.165 ppb	38.8 %
85Rb (KED)	-0.017 ppb	5.7 %
88Sr (KED)	-0.019 ppb	5.0 %
107Ag (KED)	-0.002 ppb	0.0 %
114Cd (KED)	0.000 ppb	21.7 %
133Cs (KED)	-0.002 ppb	22.0 %
138Ba (KED)	-0.044 ppb	1.1 %
139La (KED)	0.000 ppb	12.4 %
140Ce (KED)	-0.001 ppb	0.0 %
141Pr (KED)	0.000 ppb	173.2 %
142Nd (KED)	0.000 ppb	0.0 %
152Sm (KED)	0.000 ppb	
153Eu (KED)	0.000 ppb	
158Gd (KED)	0.000 ppb	0.0 %
164Dy (KED)	0.000 ppb	
165Ho (KED)	0.000 ppb	
166Er (KED)	0.000 ppb	12.4 %
169Tm (KED)	0.000 ppb	0.0 %
174Yb (KED)	0.000 ppb	0.0 %
175Lu (KED)	0.000 ppb	
205Tl (KED)	0.000 ppb	114.6 %
208Pb (KED)	-0.025 ppb	0.4 %
232Th (KED)	-0.002 ppb	0.0 %
238U (KED)	0.000 ppb	1.9 %

Category	Concentration average	Intensity average	Intensity RSD
9Be (KED)	0.000 ppb	0 cps	
11B (KED)	0.066 ppb	8 cps	99.0 %
23Na (KED)	-27.917 ppb	10,558 cps	2.8 %
24Mg (KED)	-0.682 ppb	43 cps	15.4 %
27Al (KED)	-0.295 ppb	3 cps	0.0 %
39K (KED)	-20.182 ppb	4,026 cps	0.7 %
40Ca (KED)	309.246 ppb	51,108,212 cps	3.6 %

Category	Concentration average	Intensity average	Intensity RSD
51V (KED)	-0.001 ppb	9 cps	86.6 %
52Cr (KED)	-0.006 ppb	29 cps	26.6 %
55Mn (KED)	-0.013 ppb	40 cps	33.3 %
56Fe (KED)	-0.265 ppb	419 cps	9.2 %
58Ni (KED)	-0.099 ppb	2,348 cps	3.8 %
59Co (KED)	-0.001 ppb	2 cps	86.6 %
63Cu (KED)	-0.088 ppb	149 cps	26.1 %
64Zn (KED)	-0.268 ppb	431 cps	5.0 %
69Ga (KED)	-0.011 ppb	18 cps	47.2 %
75As (KED)	-0.014 ppb	6 cps	34.6 %
80Se (KED)	-0.165 ppb	1,001 cps	2.5 %
85Rb (KED)	-0.017 ppb	8 cps	65.5 %
88Sr (KED)	-0.019 ppb	18 cps	39.0 %
107Ag (KED)	-0.002 ppb	0 cps	
114Cd (KED)	0.000 ppb	4 cps	43.3 %
133Cs (KED)	-0.002 ppb	7 cps	132.3 %
138Ba (KED)	-0.044 ppb	166 cps	10.1 %
139La (KED)	0.000 ppb	1 cps	173.2 %
140Ce (KED)	-0.001 ppb	0 cps	
141Pr (KED)	0.000 ppb	2 cps	86.6 %
142Nd (KED)	0.000 ppb	0 cps	
152Sm (KED)	0.000 ppb	0 cps	
153Eu (KED)	0.000 ppb	0 cps	
158Gd (KED)	0.000 ppb	0 cps	
164Dy (KED)	0.000 ppb	0 cps	
165Ho (KED)	0.000 ppb	0 cps	
166Er (KED)	0.000 ppb	1 cps	173.2 %
169Tm (KED)	0.000 ppb	0 cps	
174Yb (KED)	0.000 ppb	0 cps	
175Lu (KED)	0.000 ppb	0 cps	
205Tl (KED)	0.000 ppb	4 cps	114.6 %
208Pb (KED)	-0.025 ppb	97 cps	12.4 %
232Th (KED)	-0.002 ppb	0 cps	
238U (KED)	0.000 ppb	1 cps	173.2 %

Sample Summary

Instrument ID: iCAP Q

Analysis index: 2

Analysis name: blk

Analysis started at: 8/26/2021 5:05:44 PM

User name: WINDOWS-UPCI4ER\Administrator

Category	Concentration average	Concentration RSD
9Be (KED)	0.000 ppb	
11B (KED)	0.000 ppb	
23Na (KED)	0.000 ppb	
24Mg (KED)	0.000 ppb	
27Al (KED)	0.000 ppb	
39K (KED)	0.000 ppb	
40Ca (KED)	0.000 ppb	
51V (KED)	0.000 ppb	
52Cr (KED)	0.000 ppb	
55Mn (KED)	0.000 ppb	
56Fe (KED)	0.000 ppb	
58Ni (KED)	0.000 ppb	
59Co (KED)	0.000 ppb	
63Cu (KED)	0.000 ppb	
64Zn (KED)	0.000 ppb	
69Ga (KED)	0.000 ppb	
75As (KED)	0.000 ppb	
80Se (KED)	0.000 ppb	
85Rb (KED)	0.000 ppb	
88Sr (KED)	0.000 ppb	
107Ag (KED)	0.000 ppb	
114Cd (KED)	0.000 ppb	
133Cs (KED)	0.000 ppb	
138Ba (KED)	0.000 ppb	
139La (KED)	0.000 ppb	
140Ce (KED)	0.000 ppb	
141Pr (KED)	0.000 ppb	
142Nd (KED)	0.000 ppb	
152Sm (KED)	0.000 ppb	
153Eu (KED)	0.000 ppb	
158Gd (KED)	0.000 ppb	
164Dy (KED)	0.000 ppb	
165Ho (KED)	0.000 ppb	
166Er (KED)	0.000 ppb	
169Tm (KED)	0.000 ppb	
174Yb (KED)	0.000 ppb	
175Lu (KED)	0.000 ppb	
205Tl (KED)	0.000 ppb	
208Pb (KED)	0.000 ppb	
232Th (KED)	0.000 ppb	
238U (KED)	0.000 ppb	

Category	Concentration average	Intensity average	Intensity RSD
9Be (KED)	0.000 ppb	0 cps	
11B (KED)	0.000 ppb	3 cps	
23Na (KED)	0.000 ppb	47,189 cps	
24Mg (KED)	0.000 ppb	370 cps	
27Al (KED)	0.000 ppb	40 cps	
39K (KED)	0.000 ppb	9,554 cps	
40Ca (KED)	0.000 ppb	43,104,726 cps	

Category	Concentration average	Intensity average	Intensity RSD
51V (KED)	0.000 ppb	13 cps	
52Cr (KED)	0.000 ppb	97 cps	
55Mn (KED)	0.000 ppb	113 cps	
56Fe (KED)	0.000 ppb	3,317 cps	
58Ni (KED)	0.000 ppb	3,797 cps	
59Co (KED)	0.000 ppb	17 cps	
63Cu (KED)	0.000 ppb	1,740 cps	
64Zn (KED)	0.000 ppb	1,603 cps	
69Ga (KED)	0.000 ppb	80 cps	
75As (KED)	0.000 ppb	23 cps	
80Se (KED)	0.000 ppb	1,067 cps	
85Rb (KED)	0.000 ppb	97 cps	
88Sr (KED)	0.000 ppb	157 cps	
107Ag (KED)	0.000 ppb	87 cps	
114Cd (KED)	0.000 ppb	13 cps	
133Cs (KED)	0.000 ppb	47 cps	
138Ba (KED)	0.000 ppb	1,733 cps	
139La (KED)	0.000 ppb	17 cps	
140Ce (KED)	0.000 ppb	97 cps	
141Pr (KED)	0.000 ppb	3 cps	
142Nd (KED)	0.000 ppb	13 cps	
152Sm (KED)	0.000 ppb	0 cps	
153Eu (KED)	0.000 ppb	0 cps	
158Gd (KED)	0.000 ppb	3 cps	
164Dy (KED)	0.000 ppb	0 cps	
165Ho (KED)	0.000 ppb	10 cps	
166Er (KED)	0.000 ppb	17 cps	
169Tm (KED)	0.000 ppb	3 cps	
174Yb (KED)	0.000 ppb	3 cps	
175Lu (KED)	0.000 ppb	0 cps	
205Tl (KED)	0.000 ppb	0 cps	
208Pb (KED)	0.000 ppb	3,180 cps	
232Th (KED)	0.000 ppb	523 cps	
238U (KED)	0.000 ppb	100 cps	

Sample Summary

Instrument ID: iCAP Q

Analysis index: 3

Analysis name: std1

Analysis started at: 8/26/2021 5:08:05 PM

User name: WINDOWS-UPCI4ER\Administrator

Category	Concentration average	Concentration RSD
9Be (KED)	100.000 ppb	
11B (KED)	100.000 ppb	
23Na (KED)	100.000 ppb	
24Mg (KED)	100.000 ppb	
27Al (KED)	100.000 ppb	
39K (KED)	100.000 ppb	
40Ca (KED)	100.000 ppb	
51V (KED)	100.000 ppb	
52Cr (KED)	100.000 ppb	
55Mn (KED)	100.000 ppb	
56Fe (KED)	100.000 ppb	
58Ni (KED)	100.000 ppb	
59Co (KED)	100.000 ppb	
63Cu (KED)	100.000 ppb	
64Zn (KED)	100.000 ppb	
69Ga (KED)	100.000 ppb	
75As (KED)	100.000 ppb	
80Se (KED)	100.000 ppb	
85Rb (KED)	100.000 ppb	
88Sr (KED)	100.000 ppb	
107Ag (KED)	100.000 ppb	
114Cd (KED)	100.000 ppb	
133Cs (KED)	100.000 ppb	
138Ba (KED)	100.000 ppb	
139La (KED)	100.000 ppb	
140Ce (KED)	100.000 ppb	
141Pr (KED)	100.000 ppb	
142Nd (KED)	100.000 ppb	
152Sm (KED)	100.000 ppb	
153Eu (KED)	100.000 ppb	
158Gd (KED)	100.000 ppb	
164Dy (KED)	100.000 ppb	
165Ho (KED)	100.000 ppb	
166Er (KED)	100.000 ppb	
169Tm (KED)	100.000 ppb	
174Yb (KED)	100.000 ppb	
175Lu (KED)	100.000 ppb	
205Tl (KED)	100.000 ppb	
208Pb (KED)	100.000 ppb	
232Th (KED)	100.000 ppb	
238U (KED)	100.000 ppb	

Category	Concentration average	Intensity average	Intensity RSD
9Be (KED)	100.000 ppb	12,326 cps	
11B (KED)	100.000 ppb	6,748 cps	
23Na (KED)	100.000 ppb	178,405 cps	
24Mg (KED)	100.000 ppb	48,237 cps	
27Al (KED)	100.000 ppb	12,490 cps	
39K (KED)	100.000 ppb	36,941 cps	
40Ca (KED)	100.000 ppb	45,692,786 cps	

Category	Concentration average	Intensity average	Intensity RSD
51V (KED)	100.000 ppb	767,488 cps	
52Cr (KED)	100.000 ppb	1,193,223 cps	
55Mn (KED)	100.000 ppb	559,682 cps	
56Fe (KED)	100.000 ppb	1,096,304 cps	
58Ni (KED)	100.000 ppb	1,472,294 cps	
59Co (KED)	100.000 ppb	2,375,121 cps	
63Cu (KED)	100.000 ppb	1,803,488 cps	
64Zn (KED)	100.000 ppb	438,567 cps	
69Ga (KED)	100.000 ppb	558,689 cps	
75As (KED)	100.000 ppb	130,754 cps	
80Se (KED)	100.000 ppb	40,723 cps	
85Rb (KED)	100.000 ppb	531,911 cps	
88Sr (KED)	100.000 ppb	718,375 cps	
107Ag (KED)	100.000 ppb	4,862,475 cps	
114Cd (KED)	100.000 ppb	1,831,407 cps	
133Cs (KED)	100.000 ppb	2,626,126 cps	
138Ba (KED)	100.000 ppb	3,570,294 cps	
139La (KED)	100.000 ppb	7,242,930 cps	
140Ce (KED)	100.000 ppb	10,017,440 cps	
141Pr (KED)	100.000 ppb	9,898,356 cps	
142Nd (KED)	100.000 ppb	4,050,749 cps	
152Sm (KED)	100.000 ppb	3,977,356 cps	
153Eu (KED)	100.000 ppb	7,663,220 cps	
158Gd (KED)	100.000 ppb	5,364,617 cps	
164Dy (KED)	100.000 ppb	5,732,259 cps	
165Ho (KED)	100.000 ppb	21,137,213 cps	
166Er (KED)	100.000 ppb	7,296,023 cps	
169Tm (KED)	100.000 ppb	23,471,436 cps	
174Yb (KED)	100.000 ppb	8,852,138 cps	
175Lu (KED)	100.000 ppb	13,687,769 cps	
205Tl (KED)	100.000 ppb	17,980,389 cps	
208Pb (KED)	100.000 ppb	12,397,376 cps	
232Th (KED)	100.000 ppb	23,514,540 cps	
238U (KED)	100.000 ppb	28,913,231 cps	

Sample Summary

Instrument ID: iCAP Q

Analysis index: 4

Analysis name: 179407jian

Analysis started at: 8/26/2021 5:09:57 PM

User name: WINDOWS-UPCI4ER\Administrator

Category	Concentration average	Concentration RSD
9Be (KED)	0.135 ppb	
11B (KED)	5.189 ppb	
23Na (KED)	1,905.097 ppb	
24Mg (KED)	1,496.505 ppb	
27Al (KED)	1,796.072 ppb	
39K (KED)	6,145.100 ppb	
40Ca (KED)	-196.312 ppb	
51V (KED)	3.588 ppb	
52Cr (KED)	3.647 ppb	
55Mn (KED)	47.686 ppb	
56Fe (KED)	1,935.259 ppb	
58Ni (KED)	9.363 ppb	
59Co (KED)	0.899 ppb	
63Cu (KED)	9.905 ppb	
64Zn (KED)	155.579 ppb	
69Ga (KED)	4.160 ppb	
75As (KED)	0.997 ppb	
80Se (KED)	0.731 ppb	
85Rb (KED)	3.962 ppb	
88Sr (KED)	19.023 ppb	
107Ag (KED)	0.116 ppb	
114Cd (KED)	0.163 ppb	
133Cs (KED)	0.364 ppb	
138Ba (KED)	15.143 ppb	
139La (KED)	1.819 ppb	
140Ce (KED)	3.787 ppb	
141Pr (KED)	0.433 ppb	
142Nd (KED)	2.412 ppb	
152Sm (KED)	0.339 ppb	
153Eu (KED)	0.064 ppb	
158Gd (KED)	0.292 ppb	
164Dy (KED)	0.228 ppb	
165Ho (KED)	0.039 ppb	
166Er (KED)	0.102 ppb	
169Tm (KED)	0.015 ppb	
174Yb (KED)	0.085 ppb	
175Lu (KED)	0.013 ppb	
205Tl (KED)	0.035 ppb	
208Pb (KED)	2.166 ppb	
232Th (KED)	1.009 ppb	
238U (KED)	0.177 ppb	

Category	Concentration average	Intensity average	Intensity RSD
9Be (KED)	0.135 ppb	17 cps	
11B (KED)	5.189 ppb	353 cps	
23Na (KED)	1,905.097 ppb	2,546,986 cps	
24Mg (KED)	1,496.505 ppb	716,695 cps	
27Al (KED)	1,796.072 ppb	223,644 cps	
39K (KED)	6,145.100 ppb	1,692,548 cps	
40Ca (KED)	-196.312 ppb	38,024,054 cps	

Category	Concentration average	Intensity average	Intensity RSD
51V (KED)	3.588 ppb	27,554 cps	
52Cr (KED)	3.647 ppb	43,613 cps	
55Mn (KED)	47.686 ppb	266,950 cps	
56Fe (KED)	1,935.259 ppb	21,155,440 cps	
58Ni (KED)	9.363 ppb	141,291 cps	
59Co (KED)	0.899 ppb	21,358 cps	
63Cu (KED)	9.905 ppb	180,210 cps	
64Zn (KED)	155.579 ppb	681,425 cps	
69Ga (KED)	4.160 ppb	23,319 cps	
75As (KED)	0.997 ppb	1,327 cps	
80Se (KED)	0.731 ppb	1,357 cps	
85Rb (KED)	3.962 ppb	21,168 cps	
88Sr (KED)	19.023 ppb	136,782 cps	
107Ag (KED)	0.116 ppb	5,745 cps	
114Cd (KED)	0.163 ppb	2,990 cps	
133Cs (KED)	0.364 ppb	9,607 cps	
138Ba (KED)	15.143 ppb	542,108 cps	
139La (KED)	1.819 ppb	131,772 cps	
140Ce (KED)	3.787 ppb	379,465 cps	
141Pr (KED)	0.433 ppb	42,837 cps	
142Nd (KED)	2.412 ppb	97,711 cps	
152Sm (KED)	0.339 ppb	13,497 cps	
153Eu (KED)	0.064 ppb	4,934 cps	
158Gd (KED)	0.292 ppb	15,693 cps	
164Dy (KED)	0.228 ppb	13,054 cps	
165Ho (KED)	0.039 ppb	8,159 cps	
166Er (KED)	0.102 ppb	7,442 cps	
169Tm (KED)	0.015 ppb	3,500 cps	
174Yb (KED)	0.085 ppb	7,556 cps	
175Lu (KED)	0.013 ppb	1,733 cps	
205Tl (KED)	0.035 ppb	6,325 cps	
208Pb (KED)	2.166 ppb	271,668 cps	
232Th (KED)	1.009 ppb	237,663 cps	
238U (KED)	0.177 ppb	51,266 cps	

Sample Summary

Instrument ID: iCAP Q

Analysis index: 5

Analysis name: 051920jian

Analysis started at: 8/26/2021 5:12:08 PM

User name: WINDOWS-UPCI4ER\Administrator

Category	Concentration average	Concentration RSD
9Be (KED)	0.054 ppb	
11B (KED)	11.910 ppb	
23Na (KED)	1,322.019 ppb	
24Mg (KED)	1,293.508 ppb	
27Al (KED)	1,731.633 ppb	
39K (KED)	4,876.199 ppb	
40Ca (KED)	-64.170 ppb	
51V (KED)	3.352 ppb	
52Cr (KED)	3.588 ppb	
55Mn (KED)	40.269 ppb	
56Fe (KED)	1,676.072 ppb	
58Ni (KED)	7.545 ppb	
59Co (KED)	0.818 ppb	
63Cu (KED)	10.904 ppb	
64Zn (KED)	149.523 ppb	
69Ga (KED)	3.891 ppb	
75As (KED)	0.918 ppb	
80Se (KED)	1.732 ppb	
85Rb (KED)	3.683 ppb	
88Sr (KED)	18.123 ppb	
107Ag (KED)	0.171 ppb	
114Cd (KED)	0.313 ppb	
133Cs (KED)	0.337 ppb	
138Ba (KED)	13.966 ppb	
139La (KED)	1.614 ppb	
140Ce (KED)	3.197 ppb	
141Pr (KED)	0.391 ppb	
142Nd (KED)	2.068 ppb	
152Sm (KED)	0.302 ppb	
153Eu (KED)	0.059 ppb	
158Gd (KED)	0.287 ppb	
164Dy (KED)	0.193 ppb	
165Ho (KED)	0.036 ppb	
166Er (KED)	0.100 ppb	
169Tm (KED)	0.014 ppb	
174Yb (KED)	0.079 ppb	
175Lu (KED)	0.011 ppb	
205Tl (KED)	0.029 ppb	
208Pb (KED)	1.872 ppb	
232Th (KED)	0.640 ppb	
238U (KED)	0.150 ppb	

Category	Concentration average	Intensity average	Intensity RSD
9Be (KED)	0.054 ppb	7 cps	
11B (KED)	11.910 ppb	807 cps	
23Na (KED)	1,322.019 ppb	1,781,893 cps	
24Mg (KED)	1,293.508 ppb	619,527 cps	
27Al (KED)	1,731.633 ppb	215,622 cps	
39K (KED)	4,876.199 ppb	1,345,027 cps	
40Ca (KED)	-64.170 ppb	41,443,978 cps	

Category	Concentration average	Intensity average	Intensity RSD
51V (KED)	3.352 ppb	25,740 cps	
52Cr (KED)	3.588 ppb	42,907 cps	
55Mn (KED)	40.269 ppb	225,446 cps	
56Fe (KED)	1,676.072 ppb	18,322,562 cps	
58Ni (KED)	7.545 ppb	114,597 cps	
59Co (KED)	0.818 ppb	19,442 cps	
63Cu (KED)	10.904 ppb	198,207 cps	
64Zn (KED)	149.523 ppb	654,964 cps	
69Ga (KED)	3.891 ppb	21,816 cps	
75As (KED)	0.918 ppb	1,223 cps	
80Se (KED)	1.732 ppb	1,753 cps	
85Rb (KED)	3.683 ppb	19,682 cps	
88Sr (KED)	18.123 ppb	130,317 cps	
107Ag (KED)	0.171 ppb	8,379 cps	
114Cd (KED)	0.313 ppb	5,738 cps	
133Cs (KED)	0.337 ppb	8,907 cps	
138Ba (KED)	13.966 ppb	500,103 cps	
139La (KED)	1.614 ppb	116,939 cps	
140Ce (KED)	3.197 ppb	320,333 cps	
141Pr (KED)	0.391 ppb	38,690 cps	
142Nd (KED)	2.068 ppb	83,770 cps	
152Sm (KED)	0.302 ppb	12,029 cps	
153Eu (KED)	0.059 ppb	4,541 cps	
158Gd (KED)	0.287 ppb	15,423 cps	
164Dy (KED)	0.193 ppb	11,052 cps	
165Ho (KED)	0.036 ppb	7,719 cps	
166Er (KED)	0.100 ppb	7,279 cps	
169Tm (KED)	0.014 ppb	3,190 cps	
174Yb (KED)	0.079 ppb	7,019 cps	
175Lu (KED)	0.011 ppb	1,530 cps	
205Tl (KED)	0.029 ppb	5,151 cps	
208Pb (KED)	1.872 ppb	235,145 cps	
232Th (KED)	0.640 ppb	150,988 cps	
238U (KED)	0.150 ppb	43,326 cps	

Sample Summary

Instrument ID: iCAP Q

Analysis index: 6

Analysis name: 179466jian

Analysis started at: 8/26/2021 5:14:10 PM

User name: WINDOWS-UPCI4ER\Administrator

Category	Concentration average	Concentration RSD
9Be (KED)	0.054 ppb	
11B (KED)	11.218 ppb	
23Na (KED)	2,042.490 ppb	
24Mg (KED)	1,656.232 ppb	
27Al (KED)	2,052.140 ppb	
39K (KED)	8,405.961 ppb	
40Ca (KED)	194.351 ppb	
51V (KED)	4.335 ppb	
52Cr (KED)	4.333 ppb	
55Mn (KED)	54.766 ppb	
56Fe (KED)	2,230.481 ppb	
58Ni (KED)	10.451 ppb	
59Co (KED)	1.052 ppb	
63Cu (KED)	11.829 ppb	
64Zn (KED)	183.308 ppb	
69Ga (KED)	4.637 ppb	
75As (KED)	1.221 ppb	
80Se (KED)	2.287 ppb	
85Rb (KED)	4.812 ppb	
88Sr (KED)	21.905 ppb	
107Ag (KED)	0.157 ppb	
114Cd (KED)	0.382 ppb	
133Cs (KED)	0.401 ppb	
138Ba (KED)	15.609 ppb	
139La (KED)	1.964 ppb	
140Ce (KED)	3.951 ppb	
141Pr (KED)	0.484 ppb	
142Nd (KED)	2.589 ppb	
152Sm (KED)	0.360 ppb	
153Eu (KED)	0.073 ppb	
158Gd (KED)	0.336 ppb	
164Dy (KED)	0.253 ppb	
165Ho (KED)	0.043 ppb	
166Er (KED)	0.109 ppb	
169Tm (KED)	0.016 ppb	
174Yb (KED)	0.093 ppb	
175Lu (KED)	0.014 ppb	
205Tl (KED)	0.031 ppb	
208Pb (KED)	2.227 ppb	
232Th (KED)	0.729 ppb	
238U (KED)	0.148 ppb	

Category	Concentration average	Intensity average	Intensity RSD
9Be (KED)	0.054 ppb	7 cps	
11B (KED)	11.218 ppb	760 cps	
23Na (KED)	2,042.490 ppb	2,727,268 cps	
24Mg (KED)	1,656.232 ppb	793,150 cps	
27Al (KED)	2,052.140 ppb	255,524 cps	
39K (KED)	8,405.961 ppb	2,311,743 cps	
40Ca (KED)	194.351 ppb	48,134,655 cps	

Category	Concentration average	Intensity average	Intensity RSD
51V (KED)	4.335 ppb	33,284 cps	
52Cr (KED)	4.333 ppb	51,791 cps	
55Mn (KED)	54.766 ppb	306,568 cps	
56Fe (KED)	2,230.481 ppb	24,382,174 cps	
58Ni (KED)	10.451 ppb	157,271 cps	
59Co (KED)	1.052 ppb	25,002 cps	
63Cu (KED)	11.829 ppb	214,876 cps	
64Zn (KED)	183.308 ppb	802,591 cps	
69Ga (KED)	4.637 ppb	25,984 cps	
75As (KED)	1.221 ppb	1,620 cps	
80Se (KED)	2.287 ppb	1,973 cps	
85Rb (KED)	4.812 ppb	25,690 cps	
88Sr (KED)	21.905 ppb	157,481 cps	
107Ag (KED)	0.157 ppb	7,702 cps	
114Cd (KED)	0.382 ppb	7,002 cps	
133Cs (KED)	0.401 ppb	10,564 cps	
138Ba (KED)	15.609 ppb	558,733 cps	
139La (KED)	1.964 ppb	142,266 cps	
140Ce (KED)	3.951 ppb	395,863 cps	
141Pr (KED)	0.484 ppb	47,865 cps	
142Nd (KED)	2.589 ppb	104,886 cps	
152Sm (KED)	0.360 ppb	14,328 cps	
153Eu (KED)	0.073 ppb	5,578 cps	
158Gd (KED)	0.336 ppb	18,046 cps	
164Dy (KED)	0.253 ppb	14,525 cps	
165Ho (KED)	0.043 ppb	9,010 cps	
166Er (KED)	0.109 ppb	7,946 cps	
169Tm (KED)	0.016 ppb	3,691 cps	
174Yb (KED)	0.093 ppb	8,199 cps	
175Lu (KED)	0.014 ppb	1,860 cps	
205Tl (KED)	0.031 ppb	5,585 cps	
208Pb (KED)	2.227 ppb	279,160 cps	
232Th (KED)	0.729 ppb	172,040 cps	
238U (KED)	0.148 ppb	43,021 cps	

Sample Summary

Instrument ID: iCAP Q

Analysis index: 7

Analysis name: 179422jian

Analysis started at: 8/26/2021 5:16:03 PM

User name: WINDOWS-UPCI4ER\Administrator

Category	Concentration average	Concentration RSD
9Be (KED)	0.189 ppb	
11B (KED)	7.462 ppb	
23Na (KED)	1,906.476 ppb	
24Mg (KED)	2,395.523 ppb	
27Al (KED)	3,010.110 ppb	
39K (KED)	9,123.010 ppb	
40Ca (KED)	463.005 ppb	
51V (KED)	6.138 ppb	
52Cr (KED)	5.736 ppb	
55Mn (KED)	77.850 ppb	
56Fe (KED)	3,226.140 ppb	
58Ni (KED)	13.784 ppb	
59Co (KED)	1.458 ppb	
63Cu (KED)	14.260 ppb	
64Zn (KED)	168.581 ppb	
69Ga (KED)	7.149 ppb	
75As (KED)	1.533 ppb	
80Se (KED)	1.353 ppb	
85Rb (KED)	6.340 ppb	
88Sr (KED)	30.052 ppb	
107Ag (KED)	0.124 ppb	
114Cd (KED)	0.123 ppb	
133Cs (KED)	0.553 ppb	
138Ba (KED)	21.843 ppb	
139La (KED)	2.748 ppb	
140Ce (KED)	5.703 ppb	
141Pr (KED)	0.646 ppb	
142Nd (KED)	3.414 ppb	
152Sm (KED)	0.492 ppb	
153Eu (KED)	0.094 ppb	
158Gd (KED)	0.454 ppb	
164Dy (KED)	0.322 ppb	
165Ho (KED)	0.063 ppb	
166Er (KED)	0.169 ppb	
169Tm (KED)	0.023 ppb	
174Yb (KED)	0.130 ppb	
175Lu (KED)	0.019 ppb	
205Tl (KED)	0.038 ppb	
208Pb (KED)	2.609 ppb	
232Th (KED)	0.843 ppb	
238U (KED)	0.185 ppb	

Category	Concentration average	Intensity average	Intensity RSD
9Be (KED)	0.189 ppb	23 cps	
11B (KED)	7.462 ppb	507 cps	
23Na (KED)	1,906.476 ppb	2,548,796 cps	
24Mg (KED)	2,395.523 ppb	1,147,023 cps	
27Al (KED)	3,010.110 ppb	374,787 cps	
39K (KED)	9,123.010 ppb	2,508,125 cps	
40Ca (KED)	463.005 ppb	55,087,563 cps	

Category	Concentration average	Intensity average	Intensity RSD
51V (KED)	6.138 ppb	47,119 cps	
52Cr (KED)	5.736 ppb	68,538 cps	
55Mn (KED)	77.850 ppb	435,740 cps	
56Fe (KED)	3,226.140 ppb	35,264,593 cps	
58Ni (KED)	13.784 ppb	206,216 cps	
59Co (KED)	1.458 ppb	34,638 cps	
63Cu (KED)	14.260 ppb	258,675 cps	
64Zn (KED)	168.581 ppb	738,239 cps	
69Ga (KED)	7.149 ppb	40,014 cps	
75As (KED)	1.533 ppb	2,027 cps	
80Se (KED)	1.353 ppb	1,603 cps	
85Rb (KED)	6.340 ppb	33,812 cps	
88Sr (KED)	30.052 ppb	215,994 cps	
107Ag (KED)	0.124 ppb	6,122 cps	
114Cd (KED)	0.123 ppb	2,260 cps	
133Cs (KED)	0.553 ppb	14,562 cps	
138Ba (KED)	21.843 ppb	781,207 cps	
139La (KED)	2.748 ppb	199,019 cps	
140Ce (KED)	5.703 ppb	571,394 cps	
141Pr (KED)	0.646 ppb	63,981 cps	
142Nd (KED)	3.414 ppb	138,287 cps	
152Sm (KED)	0.492 ppb	19,552 cps	
153Eu (KED)	0.094 ppb	7,219 cps	
158Gd (KED)	0.454 ppb	24,337 cps	
164Dy (KED)	0.322 ppb	18,474 cps	
165Ho (KED)	0.063 ppb	13,274 cps	
166Er (KED)	0.169 ppb	12,313 cps	
169Tm (KED)	0.023 ppb	5,388 cps	
174Yb (KED)	0.130 ppb	11,469 cps	
175Lu (KED)	0.019 ppb	2,540 cps	
205Tl (KED)	0.038 ppb	6,909 cps	
208Pb (KED)	2.609 ppb	326,511 cps	
232Th (KED)	0.843 ppb	198,701 cps	
238U (KED)	0.185 ppb	53,515 cps	

Sample Summary

Instrument ID: iCAP Q

Analysis index: 8

Analysis name: 046281jian

Analysis started at: 8/26/2021 5:17:59 PM

User name: WINDOWS-UPCI4ER\Administrator

Category	Concentration average	Concentration RSD
9Be (KED)	0.027 ppb	
11B (KED)	5.683 ppb	
23Na (KED)	1,197.244 ppb	
24Mg (KED)	859.061 ppb	
27Al (KED)	987.308 ppb	
39K (KED)	4,278.308 ppb	
40Ca (KED)	829.836 ppb	
51V (KED)	1.960 ppb	
52Cr (KED)	83.601 ppb	
55Mn (KED)	32.833 ppb	
56Fe (KED)	988.711 ppb	
58Ni (KED)	4.636 ppb	
59Co (KED)	2.237 ppb	
63Cu (KED)	13.257 ppb	
64Zn (KED)	164.088 ppb	
69Ga (KED)	41.550 ppb	
75As (KED)	0.747 ppb	
80Se (KED)	2.278 ppb	
85Rb (KED)	2.343 ppb	
88Sr (KED)	18.813 ppb	
107Ag (KED)	0.083 ppb	
114Cd (KED)	0.349 ppb	
133Cs (KED)	0.163 ppb	
138Ba (KED)	126.720 ppb	
139La (KED)	0.893 ppb	
140Ce (KED)	1.694 ppb	
141Pr (KED)	0.198 ppb	
142Nd (KED)	0.998 ppb	
152Sm (KED)	0.184 ppb	
153Eu (KED)	0.068 ppb	
158Gd (KED)	0.124 ppb	
164Dy (KED)	0.091 ppb	
165Ho (KED)	0.016 ppb	
166Er (KED)	0.046 ppb	
169Tm (KED)	0.006 ppb	
174Yb (KED)	0.034 ppb	
175Lu (KED)	0.005 ppb	
205Tl (KED)	0.018 ppb	
208Pb (KED)	338.762 ppb	
232Th (KED)	0.274 ppb	
238U (KED)	0.057 ppb	

Category	Concentration average	Intensity average	Intensity RSD
9Be (KED)	0.027 ppb	3 cps	
11B (KED)	5.683 ppb	387 cps	
23Na (KED)	1,197.244 ppb	1,618,168 cps	
24Mg (KED)	859.061 ppb	411,572 cps	
27Al (KED)	987.308 ppb	122,956 cps	
39K (KED)	4,278.308 ppb	1,181,279 cps	
40Ca (KED)	829.836 ppb	64,581,388 cps	

Category	Concentration average	Intensity average	Intensity RSD
51V (KED)	1.960 ppb	15,059 cps	
52Cr (KED)	83.601 ppb	997,568 cps	
55Mn (KED)	32.833 ppb	183,836 cps	
56Fe (KED)	988.711 ppb	10,809,800 cps	
58Ni (KED)	4.636 ppb	71,876 cps	
59Co (KED)	2.237 ppb	53,139 cps	
63Cu (KED)	13.257 ppb	240,604 cps	
64Zn (KED)	164.088 ppb	718,606 cps	
69Ga (KED)	41.550 ppb	232,184 cps	
75As (KED)	0.747 ppb	1,000 cps	
80Se (KED)	2.278 ppb	1,970 cps	
85Rb (KED)	2.343 ppb	12,556 cps	
88Sr (KED)	18.813 ppb	135,276 cps	
107Ag (KED)	0.083 ppb	4,101 cps	
114Cd (KED)	0.349 ppb	6,398 cps	
133Cs (KED)	0.163 ppb	4,324 cps	
138Ba (KED)	126.720 ppb	4,523,804 cps	
139La (KED)	0.893 ppb	64,669 cps	
140Ce (KED)	1.694 ppb	169,777 cps	
141Pr (KED)	0.198 ppb	19,629 cps	
142Nd (KED)	0.998 ppb	40,456 cps	
152Sm (KED)	0.184 ppb	7,302 cps	
153Eu (KED)	0.068 ppb	5,244 cps	
158Gd (KED)	0.124 ppb	6,648 cps	
164Dy (KED)	0.091 ppb	5,244 cps	
165Ho (KED)	0.016 ppb	3,444 cps	
166Er (KED)	0.046 ppb	3,380 cps	
169Tm (KED)	0.006 ppb	1,367 cps	
174Yb (KED)	0.034 ppb	2,994 cps	
175Lu (KED)	0.005 ppb	637 cps	
205Tl (KED)	0.018 ppb	3,167 cps	
208Pb (KED)	338.762 ppb	41,990,001 cps	
232Th (KED)	0.274 ppb	65,012 cps	
238U (KED)	0.057 ppb	16,561 cps	

Sample Summary

Instrument ID: iCAP Q

Analysis index: 9

Analysis name: 1602126jian

Analysis started at: 8/26/2021 5:19:56 PM

User name: WINDOWS-UPCI4ER\Administrator

Category	Concentration average	Concentration RSD
9Be (KED)	0.027 ppb	
11B (KED)	4.547 ppb	
23Na (KED)	782.068 ppb	
24Mg (KED)	589.650 ppb	
27Al (KED)	580.008 ppb	
39K (KED)	4,482.361 ppb	
40Ca (KED)	756.227 ppb	
51V (KED)	1.086 ppb	
52Cr (KED)	2.481 ppb	
55Mn (KED)	16.137 ppb	
56Fe (KED)	538.992 ppb	
58Ni (KED)	4.076 ppb	
59Co (KED)	0.238 ppb	
63Cu (KED)	6.796 ppb	
64Zn (KED)	208.384 ppb	
69Ga (KED)	2.398 ppb	
75As (KED)	0.694 ppb	
80Se (KED)	2.026 ppb	
85Rb (KED)	1.949 ppb	
88Sr (KED)	5.721 ppb	
107Ag (KED)	0.086 ppb	
114Cd (KED)	0.269 ppb	
133Cs (KED)	0.087 ppb	
138Ba (KED)	7.245 ppb	
139La (KED)	0.418 ppb	
140Ce (KED)	0.815 ppb	
141Pr (KED)	0.101 ppb	
142Nd (KED)	0.523 ppb	
152Sm (KED)	0.075 ppb	
153Eu (KED)	0.014 ppb	
158Gd (KED)	0.071 ppb	
164Dy (KED)	0.051 ppb	
165Ho (KED)	0.009 ppb	
166Er (KED)	0.026 ppb	
169Tm (KED)	0.003 ppb	
174Yb (KED)	0.020 ppb	
175Lu (KED)	0.003 ppb	
205Tl (KED)	0.011 ppb	
208Pb (KED)	1.161 ppb	
232Th (KED)	0.136 ppb	
238U (KED)	0.026 ppb	

Category	Concentration average	Intensity average	Intensity RSD
9Be (KED)	0.027 ppb	3 cps	
11B (KED)	4.547 ppb	310 cps	
23Na (KED)	782.068 ppb	1,073,390 cps	
24Mg (KED)	589.650 ppb	282,615 cps	
27Al (KED)	580.008 ppb	72,249 cps	
39K (KED)	4,482.361 ppb	1,237,164 cps	
40Ca (KED)	756.227 ppb	62,676,330 cps	

Category	Concentration average	Intensity average	Intensity RSD
51V (KED)	1.086 ppb	8,349 cps	
52Cr (KED)	2.481 ppb	29,699 cps	
55Mn (KED)	16.137 ppb	90,413 cps	
56Fe (KED)	538.992 ppb	5,894,432 cps	
58Ni (KED)	4.076 ppb	63,655 cps	
59Co (KED)	0.238 ppb	5,665 cps	
63Cu (KED)	6.796 ppb	124,192 cps	
64Zn (KED)	208.384 ppb	912,165 cps	
69Ga (KED)	2.398 ppb	13,477 cps	
75As (KED)	0.694 ppb	930 cps	
80Se (KED)	2.026 ppb	1,870 cps	
85Rb (KED)	1.949 ppb	10,461 cps	
88Sr (KED)	5.721 ppb	41,245 cps	
107Ag (KED)	0.086 ppb	4,287 cps	
114Cd (KED)	0.269 ppb	4,941 cps	
133Cs (KED)	0.087 ppb	2,327 cps	
138Ba (KED)	7.245 ppb	260,268 cps	
139La (KED)	0.418 ppb	30,263 cps	
140Ce (KED)	0.815 ppb	81,754 cps	
141Pr (KED)	0.101 ppb	10,014 cps	
142Nd (KED)	0.523 ppb	21,218 cps	
152Sm (KED)	0.075 ppb	2,987 cps	
153Eu (KED)	0.014 ppb	1,110 cps	
158Gd (KED)	0.071 ppb	3,834 cps	
164Dy (KED)	0.051 ppb	2,914 cps	
165Ho (KED)	0.009 ppb	1,867 cps	
166Er (KED)	0.026 ppb	1,887 cps	
169Tm (KED)	0.003 ppb	727 cps	
174Yb (KED)	0.020 ppb	1,747 cps	
175Lu (KED)	0.003 ppb	380 cps	
205Tl (KED)	0.011 ppb	1,957 cps	
208Pb (KED)	1.161 ppb	147,063 cps	
232Th (KED)	0.136 ppb	32,567 cps	
238U (KED)	0.026 ppb	7,739 cps	

Sample Summary

Instrument ID: iCAP Q

Analysis index: 10

Analysis name: 1602611jian

Analysis started at: 8/26/2021 5:21:52 PM

User name: WINDOWS-UPCI4ER\Administrator

Category	Concentration average	Concentration RSD
9Be (KED)	0.000 ppb	
11B (KED)	7.808 ppb	
23Na (KED)	1,970.476 ppb	
24Mg (KED)	786.555 ppb	
27Al (KED)	664.628 ppb	
39K (KED)	5,984.264 ppb	
40Ca (KED)	893.370 ppb	
51V (KED)	1.207 ppb	
52Cr (KED)	2.264 ppb	
55Mn (KED)	18.644 ppb	
56Fe (KED)	570.361 ppb	
58Ni (KED)	2.961 ppb	
59Co (KED)	0.282 ppb	
63Cu (KED)	11.069 ppb	
64Zn (KED)	223.464 ppb	
69Ga (KED)	2.900 ppb	
75As (KED)	0.467 ppb	
80Se (KED)	1.463 ppb	
85Rb (KED)	3.294 ppb	
88Sr (KED)	7.202 ppb	
107Ag (KED)	0.243 ppb	
114Cd (KED)	0.200 ppb	
133Cs (KED)	0.098 ppb	
138Ba (KED)	8.627 ppb	
139La (KED)	0.464 ppb	
140Ce (KED)	1.041 ppb	
141Pr (KED)	0.118 ppb	
142Nd (KED)	0.615 ppb	
152Sm (KED)	0.084 ppb	
153Eu (KED)	0.017 ppb	
158Gd (KED)	0.084 ppb	
164Dy (KED)	0.057 ppb	
165Ho (KED)	0.010 ppb	
166Er (KED)	0.030 ppb	
169Tm (KED)	0.004 ppb	
174Yb (KED)	0.025 ppb	
175Lu (KED)	0.004 ppb	
205Tl (KED)	0.010 ppb	
208Pb (KED)	1.272 ppb	
232Th (KED)	0.130 ppb	
238U (KED)	0.036 ppb	

Category	Concentration average	Intensity average	Intensity RSD
9Be (KED)	0.000 ppb	0 cps	
11B (KED)	7.808 ppb	530 cps	
23Na (KED)	1,970.476 ppb	2,632,774 cps	
24Mg (KED)	786.555 ppb	376,866 cps	
27Al (KED)	664.628 ppb	82,784 cps	
39K (KED)	5,984.264 ppb	1,648,499 cps	
40Ca (KED)	893.370 ppb	66,225,686 cps	

Category	Concentration average	Intensity average	Intensity RSD
51V (KED)	1.207 ppb	9,280 cps	
52Cr (KED)	2.264 ppb	27,113 cps	
55Mn (KED)	18.644 ppb	104,442 cps	
56Fe (KED)	570.361 ppb	6,237,290 cps	
58Ni (KED)	2.961 ppb	47,283 cps	
59Co (KED)	0.282 ppb	6,712 cps	
63Cu (KED)	11.069 ppb	201,180 cps	
64Zn (KED)	223.464 ppb	978,059 cps	
69Ga (KED)	2.900 ppb	16,277 cps	
75As (KED)	0.467 ppb	633 cps	
80Se (KED)	1.463 ppb	1,647 cps	
85Rb (KED)	3.294 ppb	17,612 cps	
88Sr (KED)	7.202 ppb	51,884 cps	
107Ag (KED)	0.243 ppb	11,882 cps	
114Cd (KED)	0.200 ppb	3,674 cps	
133Cs (KED)	0.098 ppb	2,630 cps	
138Ba (KED)	8.627 ppb	309,605 cps	
139La (KED)	0.464 ppb	33,602 cps	
140Ce (KED)	1.041 ppb	104,342 cps	
141Pr (KED)	0.118 ppb	11,669 cps	
142Nd (KED)	0.615 ppb	24,942 cps	
152Sm (KED)	0.084 ppb	3,347 cps	
153Eu (KED)	0.017 ppb	1,310 cps	
158Gd (KED)	0.084 ppb	4,524 cps	
164Dy (KED)	0.057 ppb	3,250 cps	
165Ho (KED)	0.010 ppb	2,137 cps	
166Er (KED)	0.030 ppb	2,217 cps	
169Tm (KED)	0.004 ppb	940 cps	
174Yb (KED)	0.025 ppb	2,204 cps	
175Lu (KED)	0.004 ppb	517 cps	
205Tl (KED)	0.010 ppb	1,873 cps	
208Pb (KED)	1.272 ppb	160,875 cps	
232Th (KED)	0.130 ppb	31,156 cps	
238U (KED)	0.036 ppb	10,428 cps	

Sample Summary

Instrument ID: iCAP Q

Analysis index: 11

Analysis name: 1601422jian

Analysis started at: 8/26/2021 5:23:53 PM

User name: WINDOWS-UPCI4ER\Administrator

Category	Concentration average	Concentration RSD
9Be (KED)	0.027 ppb	
11B (KED)	8.500 ppb	
23Na (KED)	774.337 ppb	
24Mg (KED)	525.558 ppb	
27Al (KED)	461.477 ppb	
39K (KED)	4,352.396 ppb	
40Ca (KED)	893.128 ppb	
51V (KED)	0.861 ppb	
52Cr (KED)	2.808 ppb	
55Mn (KED)	15.522 ppb	
56Fe (KED)	433.861 ppb	
58Ni (KED)	2.224 ppb	
59Co (KED)	0.246 ppb	
63Cu (KED)	8.949 ppb	
64Zn (KED)	213.574 ppb	
69Ga (KED)	2.352 ppb	
75As (KED)	0.594 ppb	
80Se (KED)	2.867 ppb	
85Rb (KED)	1.801 ppb	
88Sr (KED)	5.594 ppb	
107Ag (KED)	0.090 ppb	
114Cd (KED)	0.443 ppb	
133Cs (KED)	0.068 ppb	
138Ba (KED)	7.108 ppb	
139La (KED)	0.359 ppb	
140Ce (KED)	0.710 ppb	
141Pr (KED)	0.085 ppb	
142Nd (KED)	0.483 ppb	
152Sm (KED)	0.067 ppb	
153Eu (KED)	0.014 ppb	
158Gd (KED)	0.059 ppb	
164Dy (KED)	0.043 ppb	
165Ho (KED)	0.007 ppb	
166Er (KED)	0.021 ppb	
169Tm (KED)	0.003 ppb	
174Yb (KED)	0.016 ppb	
175Lu (KED)	0.002 ppb	
205Tl (KED)	0.012 ppb	
208Pb (KED)	1.094 ppb	
232Th (KED)	0.099 ppb	
238U (KED)	0.022 ppb	

Category	Concentration average	Intensity average	Intensity RSD
9Be (KED)	0.027 ppb	3 cps	
11B (KED)	8.500 ppb	577 cps	
23Na (KED)	774.337 ppb	1,063,245 cps	
24Mg (KED)	525.558 ppb	251,936 cps	
27Al (KED)	461.477 ppb	57,492 cps	
39K (KED)	4,352.396 ppb	1,201,570 cps	
40Ca (KED)	893.128 ppb	66,219,416 cps	

Category	Concentration average	Intensity average	Intensity RSD
51V (KED)	0.861 ppb	6,618 cps	
52Cr (KED)	2.808 ppb	33,605 cps	
55Mn (KED)	15.522 ppb	86,969 cps	
56Fe (KED)	433.861 ppb	4,745,357 cps	
58Ni (KED)	2.224 ppb	36,453 cps	
59Co (KED)	0.246 ppb	5,865 cps	
63Cu (KED)	8.949 ppb	162,987 cps	
64Zn (KED)	213.574 ppb	934,843 cps	
69Ga (KED)	2.352 ppb	13,217 cps	
75As (KED)	0.594 ppb	800 cps	
80Se (KED)	2.867 ppb	2,204 cps	
85Rb (KED)	1.801 ppb	9,677 cps	
88Sr (KED)	5.594 ppb	40,332 cps	
107Ag (KED)	0.090 ppb	4,461 cps	
114Cd (KED)	0.443 ppb	8,133 cps	
133Cs (KED)	0.068 ppb	1,820 cps	
138Ba (KED)	7.108 ppb	255,378 cps	
139La (KED)	0.359 ppb	26,001 cps	
140Ce (KED)	0.710 ppb	71,270 cps	
141Pr (KED)	0.085 ppb	8,373 cps	
142Nd (KED)	0.483 ppb	19,595 cps	
152Sm (KED)	0.067 ppb	2,647 cps	
153Eu (KED)	0.014 ppb	1,100 cps	
158Gd (KED)	0.059 ppb	3,170 cps	
164Dy (KED)	0.043 ppb	2,470 cps	
165Ho (KED)	0.007 ppb	1,540 cps	
166Er (KED)	0.021 ppb	1,543 cps	
169Tm (KED)	0.003 ppb	803 cps	
174Yb (KED)	0.016 ppb	1,463 cps	
175Lu (KED)	0.002 ppb	337 cps	
205Tl (KED)	0.012 ppb	2,090 cps	
208Pb (KED)	1.094 ppb	138,718 cps	
232Th (KED)	0.099 ppb	23,693 cps	
238U (KED)	0.022 ppb	6,468 cps	

Sample Summary

Instrument ID: iCAP Q

Analysis index: 12

Analysis name: 1601242jian

Analysis started at: 8/26/2021 5:25:59 PM

User name: WINDOWS-UPCI4ER\Administrator

Category	Concentration average	Concentration RSD
9Be (KED)	0.027 ppb	
11B (KED)	3.706 ppb	
23Na (KED)	728.587 ppb	
24Mg (KED)	582.094 ppb	
27Al (KED)	410.063 ppb	
39K (KED)	4,516.461 ppb	
40Ca (KED)	617.292 ppb	
51V (KED)	0.808 ppb	
52Cr (KED)	1.686 ppb	
55Mn (KED)	16.147 ppb	
56Fe (KED)	421.506 ppb	
58Ni (KED)	2.077 ppb	
59Co (KED)	0.237 ppb	
63Cu (KED)	8.084 ppb	
64Zn (KED)	211.788 ppb	
69Ga (KED)	2.290 ppb	
75As (KED)	0.632 ppb	
80Se (KED)	1.454 ppb	
85Rb (KED)	1.946 ppb	
88Sr (KED)	6.257 ppb	
107Ag (KED)	0.072 ppb	
114Cd (KED)	0.226 ppb	
133Cs (KED)	0.066 ppb	
138Ba (KED)	7.277 ppb	
139La (KED)	0.368 ppb	
140Ce (KED)	0.752 ppb	
141Pr (KED)	0.093 ppb	
142Nd (KED)	0.474 ppb	
152Sm (KED)	0.067 ppb	
153Eu (KED)	0.014 ppb	
158Gd (KED)	0.057 ppb	
164Dy (KED)	0.041 ppb	
165Ho (KED)	0.008 ppb	
166Er (KED)	0.025 ppb	
169Tm (KED)	0.003 ppb	
174Yb (KED)	0.016 ppb	
175Lu (KED)	0.003 ppb	
205Tl (KED)	0.011 ppb	
208Pb (KED)	0.903 ppb	
232Th (KED)	0.098 ppb	
238U (KED)	0.020 ppb	

Category	Concentration average	Intensity average	Intensity RSD
9Be (KED)	0.027 ppb	3 cps	
11B (KED)	3.706 ppb	253 cps	
23Na (KED)	728.587 ppb	1,003,214 cps	
24Mg (KED)	582.094 ppb	278,998 cps	
27Al (KED)	410.063 ppb	51,091 cps	
39K (KED)	4,516.461 ppb	1,246,503 cps	
40Ca (KED)	617.292 ppb	59,080,604 cps	

Category	Concentration average	Intensity average	Intensity RSD
51V (KED)	0.808 ppb	6,212 cps	
52Cr (KED)	1.686 ppb	20,214 cps	
55Mn (KED)	16.147 ppb	90,467 cps	
56Fe (KED)	421.506 ppb	4,610,319 cps	
58Ni (KED)	2.077 ppb	34,297 cps	
59Co (KED)	0.237 ppb	5,648 cps	
63Cu (KED)	8.084 ppb	147,401 cps	
64Zn (KED)	211.788 ppb	927,039 cps	
69Ga (KED)	2.290 ppb	12,870 cps	
75As (KED)	0.632 ppb	850 cps	
80Se (KED)	1.454 ppb	1,643 cps	
85Rb (KED)	1.946 ppb	10,444 cps	
88Sr (KED)	6.257 ppb	45,098 cps	
107Ag (KED)	0.072 ppb	3,567 cps	
114Cd (KED)	0.226 ppb	4,161 cps	
133Cs (KED)	0.066 ppb	1,773 cps	
138Ba (KED)	7.277 ppb	261,401 cps	
139La (KED)	0.368 ppb	26,645 cps	
140Ce (KED)	0.752 ppb	75,398 cps	
141Pr (KED)	0.093 ppb	9,167 cps	
142Nd (KED)	0.474 ppb	19,195 cps	
152Sm (KED)	0.067 ppb	2,664 cps	
153Eu (KED)	0.014 ppb	1,063 cps	
158Gd (KED)	0.057 ppb	3,037 cps	
164Dy (KED)	0.041 ppb	2,370 cps	
165Ho (KED)	0.008 ppb	1,653 cps	
166Er (KED)	0.025 ppb	1,853 cps	
169Tm (KED)	0.003 ppb	697 cps	
174Yb (KED)	0.016 ppb	1,410 cps	
175Lu (KED)	0.003 ppb	373 cps	
205Tl (KED)	0.011 ppb	2,040 cps	
208Pb (KED)	0.903 ppb	115,090 cps	
232Th (KED)	0.098 ppb	23,640 cps	
238U (KED)	0.020 ppb	5,848 cps	

Sample Summary

Instrument ID: iCAP Q

Analysis index: 13

Analysis name: 1602168jian

Analysis started at: 8/26/2021 5:28:04 PM

User name: WINDOWS-UPCI4ER\Administrator

Category	Concentration average	Concentration RSD
9Be (KED)	0.000 ppb	
11B (KED)	4.448 ppb	
23Na (KED)	759.527 ppb	
24Mg (KED)	460.777 ppb	
27Al (KED)	335.807 ppb	
39K (KED)	4,456.596 ppb	
40Ca (KED)	332.573 ppb	
51V (KED)	0.590 ppb	
52Cr (KED)	2.637 ppb	
55Mn (KED)	10.124 ppb	
56Fe (KED)	325.518 ppb	
58Ni (KED)	1.715 ppb	
59Co (KED)	0.154 ppb	
63Cu (KED)	6.946 ppb	
64Zn (KED)	214.484 ppb	
69Ga (KED)	1.781 ppb	
75As (KED)	0.520 ppb	
80Se (KED)	1.715 ppb	
85Rb (KED)	1.642 ppb	
88Sr (KED)	5.031 ppb	
107Ag (KED)	0.070 ppb	
114Cd (KED)	0.298 ppb	
133Cs (KED)	0.051 ppb	
138Ba (KED)	6.263 ppb	
139La (KED)	0.283 ppb	
140Ce (KED)	0.595 ppb	
141Pr (KED)	0.063 ppb	
142Nd (KED)	0.374 ppb	
152Sm (KED)	0.045 ppb	
153Eu (KED)	0.012 ppb	
158Gd (KED)	0.042 ppb	
164Dy (KED)	0.031 ppb	
165Ho (KED)	0.005 ppb	
166Er (KED)	0.017 ppb	
169Tm (KED)	0.002 ppb	
174Yb (KED)	0.012 ppb	
175Lu (KED)	0.004 ppb	
205Tl (KED)	0.007 ppb	
208Pb (KED)	0.956 ppb	
232Th (KED)	0.076 ppb	
238U (KED)	0.017 ppb	

Category	Concentration average	Intensity average	Intensity RSD
9Be (KED)	0.000 ppb	0 cps	
11B (KED)	4.448 ppb	303 cps	
23Na (KED)	759.527 ppb	1,043,812 cps	
24Mg (KED)	460.777 ppb	220,928 cps	
27Al (KED)	335.807 ppb	41,847 cps	
39K (KED)	4,456.596 ppb	1,230,107 cps	
40Ca (KED)	332.573 ppb	51,711,918 cps	

Category	Concentration average	Intensity average	Intensity RSD
51V (KED)	0.590 ppb	4,541 cps	
52Cr (KED)	2.637 ppb	31,563 cps	
55Mn (KED)	10.124 ppb	56,765 cps	
56Fe (KED)	325.518 ppb	3,561,189 cps	
58Ni (KED)	1.715 ppb	28,987 cps	
59Co (KED)	0.154 ppb	3,684 cps	
63Cu (KED)	6.946 ppb	126,888 cps	
64Zn (KED)	214.484 ppb	938,820 cps	
69Ga (KED)	1.781 ppb	10,027 cps	
75As (KED)	0.520 ppb	703 cps	
80Se (KED)	1.715 ppb	1,747 cps	
85Rb (KED)	1.642 ppb	8,826 cps	
88Sr (KED)	5.031 ppb	36,293 cps	
107Ag (KED)	0.070 ppb	3,500 cps	
114Cd (KED)	0.298 ppb	5,468 cps	
133Cs (KED)	0.051 ppb	1,387 cps	
138Ba (KED)	6.263 ppb	225,243 cps	
139La (KED)	0.283 ppb	20,547 cps	
140Ce (KED)	0.595 ppb	59,662 cps	
141Pr (KED)	0.063 ppb	6,272 cps	
142Nd (KED)	0.374 ppb	15,173 cps	
152Sm (KED)	0.045 ppb	1,780 cps	
153Eu (KED)	0.012 ppb	890 cps	
158Gd (KED)	0.042 ppb	2,274 cps	
164Dy (KED)	0.031 ppb	1,780 cps	
165Ho (KED)	0.005 ppb	1,057 cps	
166Er (KED)	0.017 ppb	1,237 cps	
169Tm (KED)	0.002 ppb	443 cps	
174Yb (KED)	0.012 ppb	1,107 cps	
175Lu (KED)	0.004 ppb	587 cps	
205Tl (KED)	0.007 ppb	1,340 cps	
208Pb (KED)	0.956 ppb	121,670 cps	
232Th (KED)	0.076 ppb	18,290 cps	
238U (KED)	0.017 ppb	5,094 cps	

Sample Summary

Instrument ID: iCAP Q

Analysis index: 14

Analysis name: 1602088jian

Analysis started at: 8/26/2021 5:30:04 PM

User name: WINDOWS-UPCI4ER\Administrator

Category	Concentration average	Concentration RSD
9Be (KED)	0.027 ppb	
11B (KED)	3.855 ppb	
23Na (KED)	572.405 ppb	
24Mg (KED)	335.589 ppb	
27Al (KED)	293.239 ppb	
39K (KED)	3,567.787 ppb	
40Ca (KED)	418.964 ppb	
51V (KED)	0.447 ppb	
52Cr (KED)	1.178 ppb	
55Mn (KED)	8.892 ppb	
56Fe (KED)	256.445 ppb	
58Ni (KED)	1.110 ppb	
59Co (KED)	0.132 ppb	
63Cu (KED)	5.386 ppb	
64Zn (KED)	198.715 ppb	
69Ga (KED)	1.373 ppb	
75As (KED)	0.520 ppb	
80Se (KED)	1.976 ppb	
85Rb (KED)	1.522 ppb	
88Sr (KED)	3.512 ppb	
107Ag (KED)	0.069 ppb	
114Cd (KED)	0.310 ppb	
133Cs (KED)	0.046 ppb	
138Ba (KED)	4.695 ppb	
139La (KED)	0.205 ppb	
140Ce (KED)	0.426 ppb	
141Pr (KED)	0.053 ppb	
142Nd (KED)	0.295 ppb	
152Sm (KED)	0.042 ppb	
153Eu (KED)	0.009 ppb	
158Gd (KED)	0.041 ppb	
164Dy (KED)	0.027 ppb	
165Ho (KED)	0.005 ppb	
166Er (KED)	0.015 ppb	
169Tm (KED)	0.002 ppb	
174Yb (KED)	0.010 ppb	
175Lu (KED)	0.002 ppb	
205Tl (KED)	0.011 ppb	
208Pb (KED)	0.696 ppb	
232Th (KED)	0.069 ppb	
238U (KED)	0.016 ppb	

Category	Concentration average	Intensity average	Intensity RSD
9Be (KED)	0.027 ppb	3 cps	
11B (KED)	3.855 ppb	263 cps	
23Na (KED)	572.405 ppb	798,277 cps	
24Mg (KED)	335.589 ppb	161,005 cps	
27Al (KED)	293.239 ppb	36,547 cps	
39K (KED)	3,567.787 ppb	986,684 cps	
40Ca (KED)	418.964 ppb	53,947,756 cps	

Category	Concentration average	Intensity average	Intensity RSD
51V (KED)	0.447 ppb	3,447 cps	
52Cr (KED)	1.178 ppb	14,151 cps	
55Mn (KED)	8.892 ppb	49,873 cps	
56Fe (KED)	256.445 ppb	2,806,229 cps	
58Ni (KED)	1.110 ppb	20,093 cps	
59Co (KED)	0.132 ppb	3,140 cps	
63Cu (KED)	5.386 ppb	98,783 cps	
64Zn (KED)	198.715 ppb	869,914 cps	
69Ga (KED)	1.373 ppb	7,749 cps	
75As (KED)	0.520 ppb	703 cps	
80Se (KED)	1.976 ppb	1,850 cps	
85Rb (KED)	1.522 ppb	8,189 cps	
88Sr (KED)	3.512 ppb	25,379 cps	
107Ag (KED)	0.069 ppb	3,430 cps	
114Cd (KED)	0.310 ppb	5,685 cps	
133Cs (KED)	0.046 ppb	1,243 cps	
138Ba (KED)	4.695 ppb	169,277 cps	
139La (KED)	0.205 ppb	14,886 cps	
140Ce (KED)	0.426 ppb	42,813 cps	
141Pr (KED)	0.053 ppb	5,221 cps	
142Nd (KED)	0.295 ppb	11,952 cps	
152Sm (KED)	0.042 ppb	1,680 cps	
153Eu (KED)	0.009 ppb	670 cps	
158Gd (KED)	0.041 ppb	2,200 cps	
164Dy (KED)	0.027 ppb	1,547 cps	
165Ho (KED)	0.005 ppb	1,133 cps	
166Er (KED)	0.015 ppb	1,117 cps	
169Tm (KED)	0.002 ppb	440 cps	
174Yb (KED)	0.010 ppb	920 cps	
175Lu (KED)	0.002 ppb	207 cps	
205Tl (KED)	0.011 ppb	2,047 cps	
208Pb (KED)	0.696 ppb	89,400 cps	
232Th (KED)	0.069 ppb	16,681 cps	
238U (KED)	0.016 ppb	4,694 cps	

Sample Summary

Instrument ID: iCAP Q

Analysis index: 15

Analysis name: 1603041jian

Analysis started at: 8/26/2021 5:32:03 PM

User name: WINDOWS-UPCI4ER\Administrator

Category	Concentration average	Concentration RSD
9Be (KED)	0.027 ppb	
11B (KED)	4.744 ppb	
23Na (KED)	1,331.071 ppb	
24Mg (KED)	654.479 ppb	
27Al (KED)	507.698 ppb	
39K (KED)	5,982.251 ppb	
40Ca (KED)	319.672 ppb	
51V (KED)	0.932 ppb	
52Cr (KED)	1.667 ppb	
55Mn (KED)	16.058 ppb	
56Fe (KED)	440.270 ppb	
58Ni (KED)	2.106 ppb	
59Co (KED)	0.236 ppb	
63Cu (KED)	7.873 ppb	
64Zn (KED)	206.692 ppb	
69Ga (KED)	2.676 ppb	
75As (KED)	0.564 ppb	
80Se (KED)	1.412 ppb	
85Rb (KED)	2.503 ppb	
88Sr (KED)	6.304 ppb	
107Ag (KED)	0.156 ppb	
114Cd (KED)	0.320 ppb	
133Cs (KED)	0.091 ppb	
138Ba (KED)	9.922 ppb	
139La (KED)	0.397 ppb	
140Ce (KED)	0.807 ppb	
141Pr (KED)	0.097 ppb	
142Nd (KED)	0.524 ppb	
152Sm (KED)	0.079 ppb	
153Eu (KED)	0.017 ppb	
158Gd (KED)	0.071 ppb	
164Dy (KED)	0.050 ppb	
165Ho (KED)	0.009 ppb	
166Er (KED)	0.028 ppb	
169Tm (KED)	0.004 ppb	
174Yb (KED)	0.019 ppb	
175Lu (KED)	0.003 ppb	
205Tl (KED)	0.013 ppb	
208Pb (KED)	1.090 ppb	
232Th (KED)	0.108 ppb	
238U (KED)	0.029 ppb	

Category	Concentration average	Intensity average	Intensity RSD
9Be (KED)	0.027 ppb	3 cps	
11B (KED)	4.744 ppb	323 cps	
23Na (KED)	1,331.071 ppb	1,793,771 cps	
24Mg (KED)	654.479 ppb	313,646 cps	
27Al (KED)	507.698 ppb	63,246 cps	
39K (KED)	5,982.251 ppb	1,647,947 cps	
40Ca (KED)	319.672 ppb	51,378,042 cps	

Category	Concentration average	Intensity average	Intensity RSD
51V (KED)	0.932 ppb	7,165 cps	
52Cr (KED)	1.667 ppb	19,989 cps	
55Mn (KED)	16.058 ppb	89,970 cps	
56Fe (KED)	440.270 ppb	4,815,405 cps	
58Ni (KED)	2.106 ppb	34,718 cps	
59Co (KED)	0.236 ppb	5,611 cps	
63Cu (KED)	7.873 ppb	143,599 cps	
64Zn (KED)	206.692 ppb	904,773 cps	
69Ga (KED)	2.676 ppb	15,026 cps	
75As (KED)	0.564 ppb	760 cps	
80Se (KED)	1.412 ppb	1,627 cps	
85Rb (KED)	2.503 ppb	13,407 cps	
88Sr (KED)	6.304 ppb	45,432 cps	
107Ag (KED)	0.156 ppb	7,679 cps	
114Cd (KED)	0.320 ppb	5,871 cps	
133Cs (KED)	0.091 ppb	2,430 cps	
138Ba (KED)	9.922 ppb	355,789 cps	
139La (KED)	0.397 ppb	28,750 cps	
140Ce (KED)	0.807 ppb	80,965 cps	
141Pr (KED)	0.097 ppb	9,594 cps	
142Nd (KED)	0.524 ppb	21,225 cps	
152Sm (KED)	0.079 ppb	3,144 cps	
153Eu (KED)	0.017 ppb	1,283 cps	
158Gd (KED)	0.071 ppb	3,814 cps	
164Dy (KED)	0.050 ppb	2,880 cps	
165Ho (KED)	0.009 ppb	1,827 cps	
166Er (KED)	0.028 ppb	2,084 cps	
169Tm (KED)	0.004 ppb	877 cps	
174Yb (KED)	0.019 ppb	1,677 cps	
175Lu (KED)	0.003 ppb	383 cps	
205Tl (KED)	0.013 ppb	2,427 cps	
208Pb (KED)	1.090 ppb	138,222 cps	
232Th (KED)	0.108 ppb	25,907 cps	
238U (KED)	0.029 ppb	8,436 cps	

Sample Summary

Instrument ID: iCAP Q

Analysis index: 16

Analysis name: 1602166jian

Analysis started at: 8/26/2021 5:34:06 PM

User name: WINDOWS-UPCI4ER\Administrator

Category	Concentration average	Concentration RSD
9Be (KED)	0.027 ppb	
11B (KED)	7.858 ppb	
23Na (KED)	1,150.419 ppb	
24Mg (KED)	452.486 ppb	
27Al (KED)	311.096 ppb	
39K (KED)	9,011.801 ppb	
40Ca (KED)	391.891 ppb	
51V (KED)	0.575 ppb	
52Cr (KED)	2.046 ppb	
55Mn (KED)	9.174 ppb	
56Fe (KED)	303.815 ppb	
58Ni (KED)	1.374 ppb	
59Co (KED)	0.148 ppb	
63Cu (KED)	6.465 ppb	
64Zn (KED)	208.293 ppb	
69Ga (KED)	1.424 ppb	
75As (KED)	0.515 ppb	
80Se (KED)	1.631 ppb	
85Rb (KED)	3.710 ppb	
88Sr (KED)	4.809 ppb	
107Ag (KED)	0.091 ppb	
114Cd (KED)	0.330 ppb	
133Cs (KED)	0.056 ppb	
138Ba (KED)	5.250 ppb	
139La (KED)	0.384 ppb	
140Ce (KED)	0.749 ppb	
141Pr (KED)	0.091 ppb	
142Nd (KED)	0.480 ppb	
152Sm (KED)	0.060 ppb	
153Eu (KED)	0.013 ppb	
158Gd (KED)	0.061 ppb	
164Dy (KED)	0.039 ppb	
165Ho (KED)	0.006 ppb	
166Er (KED)	0.020 ppb	
169Tm (KED)	0.003 ppb	
174Yb (KED)	0.013 ppb	
175Lu (KED)	0.002 ppb	
205Tl (KED)	0.010 ppb	
208Pb (KED)	0.808 ppb	
232Th (KED)	0.102 ppb	
238U (KED)	0.021 ppb	

Category	Concentration average	Intensity average	Intensity RSD
9Be (KED)	0.027 ppb	3 cps	
11B (KED)	7.858 ppb	533 cps	
23Na (KED)	1,150.419 ppb	1,556,726 cps	
24Mg (KED)	452.486 ppb	216,959 cps	
27Al (KED)	311.096 ppb	38,770 cps	
39K (KED)	9,011.801 ppb	2,477,668 cps	
40Ca (KED)	391.891 ppb	53,247,105 cps	

Category	Concentration average	Intensity average	Intensity RSD
51V (KED)	0.575 ppb	4,424 cps	
52Cr (KED)	2.046 ppb	24,507 cps	
55Mn (KED)	9.174 ppb	51,446 cps	
56Fe (KED)	303.815 ppb	3,323,973 cps	
58Ni (KED)	1.374 ppb	23,980 cps	
59Co (KED)	0.148 ppb	3,534 cps	
63Cu (KED)	6.465 ppb	118,227 cps	
64Zn (KED)	208.293 ppb	911,769 cps	
69Ga (KED)	1.424 ppb	8,033 cps	
75As (KED)	0.515 ppb	697 cps	
80Se (KED)	1.631 ppb	1,713 cps	
85Rb (KED)	3.710 ppb	19,829 cps	
88Sr (KED)	4.809 ppb	34,695 cps	
107Ag (KED)	0.091 ppb	4,497 cps	
114Cd (KED)	0.330 ppb	6,055 cps	
133Cs (KED)	0.056 ppb	1,507 cps	
138Ba (KED)	5.250 ppb	189,089 cps	
139La (KED)	0.384 ppb	27,828 cps	
140Ce (KED)	0.749 ppb	75,113 cps	
141Pr (KED)	0.091 ppb	9,020 cps	
142Nd (KED)	0.480 ppb	19,472 cps	
152Sm (KED)	0.060 ppb	2,400 cps	
153Eu (KED)	0.013 ppb	1,007 cps	
158Gd (KED)	0.061 ppb	3,254 cps	
164Dy (KED)	0.039 ppb	2,210 cps	
165Ho (KED)	0.006 ppb	1,353 cps	
166Er (KED)	0.020 ppb	1,487 cps	
169Tm (KED)	0.003 ppb	627 cps	
174Yb (KED)	0.013 ppb	1,117 cps	
175Lu (KED)	0.002 ppb	297 cps	
205Tl (KED)	0.010 ppb	1,833 cps	
208Pb (KED)	0.808 ppb	103,333 cps	
232Th (KED)	0.102 ppb	24,621 cps	
238U (KED)	0.021 ppb	6,255 cps	

Sample Summary

Instrument ID: iCAP Q

Analysis index: 17

Analysis name: 1602152jian

Analysis started at: 8/26/2021 5:36:12 PM

User name: WINDOWS-UPCI4ER\Administrator

Category	Concentration average	Concentration RSD
9Be (KED)	0.027 ppb	
11B (KED)	5.090 ppb	
23Na (KED)	728.921 ppb	
24Mg (KED)	444.859 ppb	
27Al (KED)	387.453 ppb	
39K (KED)	3,385.741 ppb	
40Ca (KED)	277.327 ppb	
51V (KED)	0.709 ppb	
52Cr (KED)	1.888 ppb	
55Mn (KED)	12.351 ppb	
56Fe (KED)	359.452 ppb	
58Ni (KED)	2.554 ppb	
59Co (KED)	0.176 ppb	
63Cu (KED)	6.913 ppb	
64Zn (KED)	234.449 ppb	
69Ga (KED)	1.774 ppb	
75As (KED)	0.569 ppb	
80Se (KED)	2.547 ppb	
85Rb (KED)	1.643 ppb	
88Sr (KED)	4.786 ppb	
107Ag (KED)	0.116 ppb	
114Cd (KED)	0.374 ppb	
133Cs (KED)	0.063 ppb	
138Ba (KED)	6.506 ppb	
139La (KED)	0.318 ppb	
140Ce (KED)	0.663 ppb	
141Pr (KED)	0.078 ppb	
142Nd (KED)	0.411 ppb	
152Sm (KED)	0.056 ppb	
153Eu (KED)	0.013 ppb	
158Gd (KED)	0.053 ppb	
164Dy (KED)	0.039 ppb	
165Ho (KED)	0.007 ppb	
166Er (KED)	0.021 ppb	
169Tm (KED)	0.003 ppb	
174Yb (KED)	0.016 ppb	
175Lu (KED)	0.002 ppb	
205Tl (KED)	0.010 ppb	
208Pb (KED)	1.227 ppb	
232Th (KED)	0.086 ppb	
238U (KED)	0.021 ppb	

Category	Concentration average	Intensity average	Intensity RSD
9Be (KED)	0.027 ppb	3 cps	
11B (KED)	5.090 ppb	347 cps	
23Na (KED)	728.921 ppb	1,003,652 cps	
24Mg (KED)	444.859 ppb	213,309 cps	
27Al (KED)	387.453 ppb	48,276 cps	
39K (KED)	3,385.741 ppb	936,826 cps	
40Ca (KED)	277.327 ppb	50,282,128 cps	

Category	Concentration average	Intensity average	Intensity RSD
51V (KED)	0.709 ppb	5,458 cps	
52Cr (KED)	1.888 ppb	22,625 cps	
55Mn (KED)	12.351 ppb	69,225 cps	
56Fe (KED)	359.452 ppb	3,932,076 cps	
58Ni (KED)	2.554 ppb	41,302 cps	
59Co (KED)	0.176 ppb	4,197 cps	
63Cu (KED)	6.913 ppb	126,296 cps	
64Zn (KED)	234.449 ppb	1,026,062 cps	
69Ga (KED)	1.774 ppb	9,987 cps	
75As (KED)	0.569 ppb	767 cps	
80Se (KED)	2.547 ppb	2,077 cps	
85Rb (KED)	1.643 ppb	8,833 cps	
88Sr (KED)	4.786 ppb	34,531 cps	
107Ag (KED)	0.116 ppb	5,751 cps	
114Cd (KED)	0.374 ppb	6,869 cps	
133Cs (KED)	0.063 ppb	1,710 cps	
138Ba (KED)	6.506 ppb	233,888 cps	
139La (KED)	0.318 ppb	23,078 cps	
140Ce (KED)	0.663 ppb	66,544 cps	
141Pr (KED)	0.078 ppb	7,772 cps	
142Nd (KED)	0.411 ppb	16,671 cps	
152Sm (KED)	0.056 ppb	2,240 cps	
153Eu (KED)	0.013 ppb	993 cps	
158Gd (KED)	0.053 ppb	2,837 cps	
164Dy (KED)	0.039 ppb	2,227 cps	
165Ho (KED)	0.007 ppb	1,450 cps	
166Er (KED)	0.021 ppb	1,567 cps	
169Tm (KED)	0.003 ppb	627 cps	
174Yb (KED)	0.016 ppb	1,460 cps	
175Lu (KED)	0.002 ppb	250 cps	
205Tl (KED)	0.010 ppb	1,730 cps	
208Pb (KED)	1.227 ppb	155,232 cps	
232Th (KED)	0.086 ppb	20,787 cps	
238U (KED)	0.021 ppb	6,212 cps	

Sample Summary

Instrument ID: iCAP Q

Analysis index: 18

Analysis name: 1602201jian

Analysis started at: 8/26/2021 5:38:13 PM

User name: WINDOWS-UPCI4ER\Administrator

Category	Concentration average	Concentration RSD
9Be (KED)	0.027 ppb	
11B (KED)	3.262 ppb	
23Na (KED)	1,609.285 ppb	
24Mg (KED)	542.000 ppb	
27Al (KED)	336.264 ppb	
39K (KED)	4,943.563 ppb	
40Ca (KED)	92.446 ppb	
51V (KED)	0.550 ppb	
52Cr (KED)	1.799 ppb	
55Mn (KED)	10.580 ppb	
56Fe (KED)	284.499 ppb	
58Ni (KED)	1.305 ppb	
59Co (KED)	6.753 ppb	
63Cu (KED)	8.448 ppb	
64Zn (KED)	231.203 ppb	
69Ga (KED)	1.553 ppb	
75As (KED)	0.497 ppb	
80Se (KED)	2.110 ppb	
85Rb (KED)	2.775 ppb	
88Sr (KED)	4.588 ppb	
107Ag (KED)	0.074 ppb	
114Cd (KED)	0.362 ppb	
133Cs (KED)	0.056 ppb	
138Ba (KED)	5.698 ppb	
139La (KED)	0.257 ppb	
140Ce (KED)	0.543 ppb	
141Pr (KED)	0.064 ppb	
142Nd (KED)	0.360 ppb	
152Sm (KED)	0.048 ppb	
153Eu (KED)	0.011 ppb	
158Gd (KED)	0.043 ppb	
164Dy (KED)	0.033 ppb	
165Ho (KED)	0.006 ppb	
166Er (KED)	0.018 ppb	
169Tm (KED)	0.002 ppb	
174Yb (KED)	0.013 ppb	
175Lu (KED)	0.002 ppb	
205Tl (KED)	0.009 ppb	
208Pb (KED)	0.852 ppb	
232Th (KED)	0.071 ppb	
238U (KED)	0.019 ppb	

Category	Concentration average	Intensity average	Intensity RSD
9Be (KED)	0.027 ppb	3 cps	
11B (KED)	3.262 ppb	223 cps	
23Na (KED)	1,609.285 ppb	2,158,833 cps	
24Mg (KED)	542.000 ppb	259,806 cps	
27Al (KED)	336.264 ppb	41,904 cps	
39K (KED)	4,943.563 ppb	1,363,476 cps	
40Ca (KED)	92.446 ppb	45,497,284 cps	

Category	Concentration average	Intensity average	Intensity RSD
51V (KED)	0.550 ppb	4,237 cps	
52Cr (KED)	1.799 ppb	21,555 cps	
55Mn (KED)	10.580 ppb	59,317 cps	
56Fe (KED)	284.499 ppb	3,112,853 cps	
58Ni (KED)	1.305 ppb	22,958 cps	
59Co (KED)	6.753 ppb	160,404 cps	
63Cu (KED)	8.448 ppb	153,950 cps	
64Zn (KED)	231.203 ppb	1,011,875 cps	
69Ga (KED)	1.553 ppb	8,753 cps	
75As (KED)	0.497 ppb	673 cps	
80Se (KED)	2.110 ppb	1,903 cps	
85Rb (KED)	2.775 ppb	14,856 cps	
88Sr (KED)	4.588 ppb	33,111 cps	
107Ag (KED)	0.074 ppb	3,691 cps	
114Cd (KED)	0.362 ppb	6,642 cps	
133Cs (KED)	0.056 ppb	1,530 cps	
138Ba (KED)	5.698 ppb	205,083 cps	
139La (KED)	0.257 ppb	18,614 cps	
140Ce (KED)	0.543 ppb	54,482 cps	
141Pr (KED)	0.064 ppb	6,328 cps	
142Nd (KED)	0.360 ppb	14,605 cps	
152Sm (KED)	0.048 ppb	1,907 cps	
153Eu (KED)	0.011 ppb	843 cps	
158Gd (KED)	0.043 ppb	2,320 cps	
164Dy (KED)	0.033 ppb	1,890 cps	
165Ho (KED)	0.006 ppb	1,210 cps	
166Er (KED)	0.018 ppb	1,307 cps	
169Tm (KED)	0.002 ppb	477 cps	
174Yb (KED)	0.013 ppb	1,180 cps	
175Lu (KED)	0.002 ppb	227 cps	
205Tl (KED)	0.009 ppb	1,530 cps	
208Pb (KED)	0.852 ppb	108,762 cps	
232Th (KED)	0.071 ppb	17,165 cps	
238U (KED)	0.019 ppb	5,648 cps	

Sample Summary

Instrument ID: iCAP Q

Analysis index: 19

Analysis name: 1602639jian

Analysis started at: 8/26/2021 5:40:10 PM

User name: WINDOWS-UPCI4ER\Administrator

Category	Concentration average	Concentration RSD
9Be (KED)	0.000 ppb	
11B (KED)	4.695 ppb	
23Na (KED)	1,514.780 ppb	
24Mg (KED)	853.089 ppb	
27Al (KED)	438.106 ppb	
39K (KED)	5,029.638 ppb	
40Ca (KED)	157.286 ppb	
51V (KED)	0.753 ppb	
52Cr (KED)	1.907 ppb	
55Mn (KED)	17.903 ppb	
56Fe (KED)	388.052 ppb	
58Ni (KED)	1.977 ppb	
59Co (KED)	0.211 ppb	
63Cu (KED)	8.345 ppb	
64Zn (KED)	194.217 ppb	
69Ga (KED)	2.602 ppb	
75As (KED)	0.441 ppb	
80Se (KED)	0.580 ppb	
85Rb (KED)	2.453 ppb	
88Sr (KED)	8.700 ppb	
107Ag (KED)	0.051 ppb	
114Cd (KED)	0.124 ppb	
133Cs (KED)	0.074 ppb	
138Ba (KED)	9.733 ppb	
139La (KED)	0.369 ppb	
140Ce (KED)	0.768 ppb	
141Pr (KED)	0.094 ppb	
142Nd (KED)	0.512 ppb	
152Sm (KED)	0.071 ppb	
153Eu (KED)	0.018 ppb	
158Gd (KED)	0.059 ppb	
164Dy (KED)	0.044 ppb	
165Ho (KED)	0.008 ppb	
166Er (KED)	0.023 ppb	
169Tm (KED)	0.003 ppb	
174Yb (KED)	0.019 ppb	
175Lu (KED)	0.003 ppb	
205Tl (KED)	0.010 ppb	
208Pb (KED)	1.043 ppb	
232Th (KED)	0.099 ppb	
238U (KED)	0.024 ppb	

Category	Concentration average	Intensity average	Intensity RSD
9Be (KED)	0.000 ppb	0 cps	
11B (KED)	4.695 ppb	320 cps	
23Na (KED)	1,514.780 ppb	2,034,827 cps	
24Mg (KED)	853.089 ppb	408,714 cps	
27Al (KED)	438.106 ppb	54,583 cps	
39K (KED)	5,029.638 ppb	1,387,050 cps	
40Ca (KED)	157.286 ppb	47,175,372 cps	

Category	Concentration average	Intensity average	Intensity RSD
51V (KED)	0.753 ppb	5,795 cps	
52Cr (KED)	1.907 ppb	22,844 cps	
55Mn (KED)	17.903 ppb	100,291 cps	
56Fe (KED)	388.052 ppb	4,244,673 cps	
58Ni (KED)	1.977 ppb	32,823 cps	
59Co (KED)	0.211 ppb	5,024 cps	
63Cu (KED)	8.345 ppb	152,094 cps	
64Zn (KED)	194.217 ppb	850,263 cps	
69Ga (KED)	2.602 ppb	14,615 cps	
75As (KED)	0.441 ppb	600 cps	
80Se (KED)	0.580 ppb	1,297 cps	
85Rb (KED)	2.453 ppb	13,140 cps	
88Sr (KED)	8.700 ppb	62,640 cps	
107Ag (KED)	0.051 ppb	2,544 cps	
114Cd (KED)	0.124 ppb	2,277 cps	
133Cs (KED)	0.074 ppb	1,997 cps	
138Ba (KED)	9.733 ppb	349,075 cps	
139La (KED)	0.369 ppb	26,745 cps	
140Ce (KED)	0.768 ppb	76,993 cps	
141Pr (KED)	0.094 ppb	9,324 cps	
142Nd (KED)	0.512 ppb	20,737 cps	
152Sm (KED)	0.071 ppb	2,810 cps	
153Eu (KED)	0.018 ppb	1,347 cps	
158Gd (KED)	0.059 ppb	3,184 cps	
164Dy (KED)	0.044 ppb	2,537 cps	
165Ho (KED)	0.008 ppb	1,667 cps	
166Er (KED)	0.023 ppb	1,720 cps	
169Tm (KED)	0.003 ppb	740 cps	
174Yb (KED)	0.019 ppb	1,680 cps	
175Lu (KED)	0.003 ppb	417 cps	
205Tl (KED)	0.010 ppb	1,820 cps	
208Pb (KED)	1.043 ppb	132,415 cps	
232Th (KED)	0.099 ppb	23,766 cps	
238U (KED)	0.024 ppb	6,895 cps	

Sample Summary

Instrument ID: iCAP Q

Analysis index: 20

Analysis name: 16014jian

Analysis started at: 8/26/2021 5:42:14 PM

User name: WINDOWS-UPCI4ER\Administrator

Category	Concentration average	Concentration RSD
9Be (KED)	0.000 ppb	
11B (KED)	3.212 ppb	
23Na (KED)	847.601 ppb	
24Mg (KED)	658.591 ppb	
27Al (KED)	641.616 ppb	
39K (KED)	5,454.581 ppb	
40Ca (KED)	138.515 ppb	
51V (KED)	1.153 ppb	
52Cr (KED)	2.211 ppb	
55Mn (KED)	19.547 ppb	
56Fe (KED)	501.794 ppb	
58Ni (KED)	2.362 ppb	
59Co (KED)	0.273 ppb	
63Cu (KED)	9.047 ppb	
64Zn (KED)	197.813 ppb	
69Ga (KED)	2.466 ppb	
75As (KED)	0.826 ppb	
80Se (KED)	1.858 ppb	
85Rb (KED)	2.977 ppb	
88Sr (KED)	8.256 ppb	
107Ag (KED)	0.089 ppb	
114Cd (KED)	0.322 ppb	
133Cs (KED)	0.108 ppb	
138Ba (KED)	9.249 ppb	
139La (KED)	0.514 ppb	
140Ce (KED)	1.028 ppb	
141Pr (KED)	0.127 ppb	
142Nd (KED)	0.677 ppb	
152Sm (KED)	0.101 ppb	
153Eu (KED)	0.021 ppb	
158Gd (KED)	0.089 ppb	
164Dy (KED)	0.068 ppb	
165Ho (KED)	0.013 ppb	
166Er (KED)	0.033 ppb	
169Tm (KED)	0.004 ppb	
174Yb (KED)	0.026 ppb	
175Lu (KED)	0.004 ppb	
205Tl (KED)	0.010 ppb	
208Pb (KED)	0.920 ppb	
232Th (KED)	0.152 ppb	
238U (KED)	0.030 ppb	

Category	Concentration average	Intensity average	Intensity RSD
9Be (KED)	0.000 ppb	0 cps	
11B (KED)	3.212 ppb	220 cps	
23Na (KED)	847.601 ppb	1,159,379 cps	
24Mg (KED)	658.591 ppb	315,614 cps	
27Al (KED)	641.616 ppb	79,919 cps	
39K (KED)	5,454.581 ppb	1,503,431 cps	
40Ca (KED)	138.515 ppb	46,689,576 cps	

Category	Concentration average	Intensity average	Intensity RSD
51V (KED)	1.153 ppb	8,860 cps	
52Cr (KED)	2.211 ppb	26,478 cps	
55Mn (KED)	19.547 ppb	109,491 cps	
56Fe (KED)	501.794 ppb	5,487,860 cps	
58Ni (KED)	2.362 ppb	38,479 cps	
59Co (KED)	0.273 ppb	6,502 cps	
63Cu (KED)	9.047 ppb	164,746 cps	
64Zn (KED)	197.813 ppb	865,972 cps	
69Ga (KED)	2.466 ppb	13,858 cps	
75As (KED)	0.826 ppb	1,103 cps	
80Se (KED)	1.858 ppb	1,803 cps	
85Rb (KED)	2.977 ppb	15,927 cps	
88Sr (KED)	8.256 ppb	59,451 cps	
107Ag (KED)	0.089 ppb	4,394 cps	
114Cd (KED)	0.322 ppb	5,905 cps	
133Cs (KED)	0.108 ppb	2,877 cps	
138Ba (KED)	9.249 ppb	331,802 cps	
139La (KED)	0.514 ppb	37,222 cps	
140Ce (KED)	1.028 ppb	103,087 cps	
141Pr (KED)	0.127 ppb	12,610 cps	
142Nd (KED)	0.677 ppb	27,447 cps	
152Sm (KED)	0.101 ppb	4,004 cps	
153Eu (KED)	0.021 ppb	1,590 cps	
158Gd (KED)	0.089 ppb	4,778 cps	
164Dy (KED)	0.068 ppb	3,907 cps	
165Ho (KED)	0.013 ppb	2,784 cps	
166Er (KED)	0.033 ppb	2,400 cps	
169Tm (KED)	0.004 ppb	1,010 cps	
174Yb (KED)	0.026 ppb	2,324 cps	
175Lu (KED)	0.004 ppb	537 cps	
205Tl (KED)	0.010 ppb	1,790 cps	
208Pb (KED)	0.920 ppb	117,154 cps	
232Th (KED)	0.152 ppb	36,370 cps	
238U (KED)	0.030 ppb	8,716 cps	

Sample Summary

Instrument ID: iCAP Q

Analysis index: 21

Analysis name: 16001jian

Analysis started at: 8/26/2021 5:44:17 PM

User name: WINDOWS-UPCI4ER\Administrator

Category	Concentration average	Concentration RSD
9Be (KED)	0.027 ppb	
11B (KED)	8.302 ppb	
23Na (KED)	1,040.196 ppb	
24Mg (KED)	606.137 ppb	
27Al (KED)	381.191 ppb	
39K (KED)	6,265.278 ppb	
40Ca (KED)	108.740 ppb	
51V (KED)	0.743 ppb	
52Cr (KED)	1.604 ppb	
55Mn (KED)	16.003 ppb	
56Fe (KED)	320.978 ppb	
58Ni (KED)	1.719 ppb	
59Co (KED)	0.220 ppb	
63Cu (KED)	8.742 ppb	
64Zn (KED)	218.006 ppb	
69Ga (KED)	2.172 ppb	
75As (KED)	0.530 ppb	
80Se (KED)	2.379 ppb	
85Rb (KED)	2.957 ppb	
88Sr (KED)	7.230 ppb	
107Ag (KED)	0.142 ppb	
114Cd (KED)	0.440 ppb	
133Cs (KED)	0.068 ppb	
138Ba (KED)	8.980 ppb	
139La (KED)	0.319 ppb	
140Ce (KED)	0.615 ppb	
141Pr (KED)	0.078 ppb	
142Nd (KED)	0.419 ppb	
152Sm (KED)	0.060 ppb	
153Eu (KED)	0.014 ppb	
158Gd (KED)	0.054 ppb	
164Dy (KED)	0.042 ppb	
165Ho (KED)	0.008 ppb	
166Er (KED)	0.032 ppb	
169Tm (KED)	0.003 ppb	
174Yb (KED)	0.015 ppb	
175Lu (KED)	0.002 ppb	
205Tl (KED)	0.010 ppb	
208Pb (KED)	1.013 ppb	
232Th (KED)	0.123 ppb	
238U (KED)	0.034 ppb	

Category	Concentration average	Intensity average	Intensity RSD
9Be (KED)	0.027 ppb	3 cps	
11B (KED)	8.302 ppb	563 cps	
23Na (KED)	1,040.196 ppb	1,412,095 cps	
24Mg (KED)	606.137 ppb	290,507 cps	
27Al (KED)	381.191 ppb	47,497 cps	
39K (KED)	6,265.278 ppb	1,725,462 cps	
40Ca (KED)	108.740 ppb	45,918,983 cps	

Category	Concentration average	Intensity average	Intensity RSD
51V (KED)	0.743 ppb	5,715 cps	
52Cr (KED)	1.604 ppb	19,235 cps	
55Mn (KED)	16.003 ppb	89,661 cps	
56Fe (KED)	320.978 ppb	3,511,559 cps	
58Ni (KED)	1.719 ppb	29,034 cps	
59Co (KED)	0.220 ppb	5,244 cps	
63Cu (KED)	8.742 ppb	159,250 cps	
64Zn (KED)	218.006 ppb	954,208 cps	
69Ga (KED)	2.172 ppb	12,213 cps	
75As (KED)	0.530 ppb	717 cps	
80Se (KED)	2.379 ppb	2,010 cps	
85Rb (KED)	2.957 ppb	15,820 cps	
88Sr (KED)	7.230 ppb	52,082 cps	
107Ag (KED)	0.142 ppb	6,979 cps	
114Cd (KED)	0.440 ppb	8,076 cps	
133Cs (KED)	0.068 ppb	1,837 cps	
138Ba (KED)	8.980 ppb	322,179 cps	
139La (KED)	0.319 ppb	23,088 cps	
140Ce (KED)	0.615 ppb	61,732 cps	
141Pr (KED)	0.078 ppb	7,699 cps	
142Nd (KED)	0.419 ppb	16,988 cps	
152Sm (KED)	0.060 ppb	2,367 cps	
153Eu (KED)	0.014 ppb	1,107 cps	
158Gd (KED)	0.054 ppb	2,874 cps	
164Dy (KED)	0.042 ppb	2,424 cps	
165Ho (KED)	0.008 ppb	1,640 cps	
166Er (KED)	0.032 ppb	2,337 cps	
169Tm (KED)	0.003 ppb	633 cps	
174Yb (KED)	0.015 ppb	1,363 cps	
175Lu (KED)	0.002 ppb	303 cps	
205Tl (KED)	0.010 ppb	1,740 cps	
208Pb (KED)	1.013 ppb	128,744 cps	
232Th (KED)	0.123 ppb	29,542 cps	
238U (KED)	0.034 ppb	9,937 cps	

Sample Summary

Instrument ID: iCAP Q

Analysis index: 22

Analysis name: 1702121jian

Analysis started at: 8/26/2021 5:46:28 PM

User name: WINDOWS-UPCI4ER\Administrator

Category	Concentration average	Concentration RSD
9Be (KED)	0.027 ppb	
11B (KED)	5.881 ppb	
23Na (KED)	2,615.752 ppb	
24Mg (KED)	742.918 ppb	
27Al (KED)	502.774 ppb	
39K (KED)	8,416.161 ppb	
40Ca (KED)	147.923 ppb	
51V (KED)	0.849 ppb	
52Cr (KED)	1.372 ppb	
55Mn (KED)	14.548 ppb	
56Fe (KED)	409.468 ppb	
58Ni (KED)	2.120 ppb	
59Co (KED)	0.244 ppb	
63Cu (KED)	9.783 ppb	
64Zn (KED)	224.630 ppb	
69Ga (KED)	2.319 ppb	
75As (KED)	0.444 ppb	
80Se (KED)	2.799 ppb	
85Rb (KED)	4.791 ppb	
88Sr (KED)	7.154 ppb	
107Ag (KED)	0.078 ppb	
114Cd (KED)	0.509 ppb	
133Cs (KED)	0.088 ppb	
138Ba (KED)	8.723 ppb	
139La (KED)	0.405 ppb	
140Ce (KED)	0.800 ppb	
141Pr (KED)	0.101 ppb	
142Nd (KED)	0.538 ppb	
152Sm (KED)	0.072 ppb	
153Eu (KED)	0.021 ppb	
158Gd (KED)	0.069 ppb	
164Dy (KED)	0.052 ppb	
165Ho (KED)	0.009 ppb	
166Er (KED)	0.023 ppb	
169Tm (KED)	0.004 ppb	
174Yb (KED)	0.021 ppb	
175Lu (KED)	0.004 ppb	
205Tl (KED)	0.014 ppb	
208Pb (KED)	1.066 ppb	
232Th (KED)	0.111 ppb	
238U (KED)	0.024 ppb	

Category	Concentration average	Intensity average	Intensity RSD
9Be (KED)	0.027 ppb	3 cps	
11B (KED)	5.881 ppb	400 cps	
23Na (KED)	2,615.752 ppb	3,479,481 cps	
24Mg (KED)	742.918 ppb	355,979 cps	
27Al (KED)	502.774 ppb	62,633 cps	
39K (KED)	8,416.161 ppb	2,314,536 cps	
40Ca (KED)	147.923 ppb	46,933,073 cps	

Category	Concentration average	Intensity average	Intensity RSD
51V (KED)	0.849 ppb	6,532 cps	
52Cr (KED)	1.372 ppb	16,471 cps	
55Mn (KED)	14.548 ppb	81,519 cps	
56Fe (KED)	409.468 ppb	4,478,745 cps	
58Ni (KED)	2.120 ppb	34,932 cps	
59Co (KED)	0.244 ppb	5,815 cps	
63Cu (KED)	9.783 ppb	177,999 cps	
64Zn (KED)	224.630 ppb	983,155 cps	
69Ga (KED)	2.319 ppb	13,037 cps	
75As (KED)	0.444 ppb	603 cps	
80Se (KED)	2.799 ppb	2,177 cps	
85Rb (KED)	4.791 ppb	25,576 cps	
88Sr (KED)	7.154 ppb	51,536 cps	
107Ag (KED)	0.078 ppb	3,871 cps	
114Cd (KED)	0.509 ppb	9,330 cps	
133Cs (KED)	0.088 ppb	2,357 cps	
138Ba (KED)	8.723 ppb	313,019 cps	
139La (KED)	0.405 ppb	29,381 cps	
140Ce (KED)	0.800 ppb	80,227 cps	
141Pr (KED)	0.101 ppb	10,017 cps	
142Nd (KED)	0.538 ppb	21,812 cps	
152Sm (KED)	0.072 ppb	2,880 cps	
153Eu (KED)	0.021 ppb	1,600 cps	
158Gd (KED)	0.069 ppb	3,694 cps	
164Dy (KED)	0.052 ppb	2,984 cps	
165Ho (KED)	0.009 ppb	1,863 cps	
166Er (KED)	0.023 ppb	1,673 cps	
169Tm (KED)	0.004 ppb	897 cps	
174Yb (KED)	0.021 ppb	1,863 cps	
175Lu (KED)	0.004 ppb	543 cps	
205Tl (KED)	0.014 ppb	2,540 cps	
208Pb (KED)	1.066 ppb	135,312 cps	
232Th (KED)	0.111 ppb	26,702 cps	
238U (KED)	0.024 ppb	6,955 cps	

Sample Summary

Instrument ID: iCAP Q

Analysis index: 23

Analysis name: 1701274jian

Analysis started at: 8/26/2021 5:48:31 PM

User name: WINDOWS-UPCI4ER\Administrator

Category	Concentration average	Concentration RSD
9Be (KED)	0.000 ppb	
11B (KED)	6.079 ppb	
23Na (KED)	724.517 ppb	
24Mg (KED)	742.805 ppb	
27Al (KED)	444.106 ppb	
39K (KED)	4,897.239 ppb	
40Ca (KED)	183.835 ppb	
51V (KED)	0.863 ppb	
52Cr (KED)	1.204 ppb	
55Mn (KED)	17.366 ppb	
56Fe (KED)	377.407 ppb	
58Ni (KED)	1.839 ppb	
59Co (KED)	0.236 ppb	
63Cu (KED)	11.664 ppb	
64Zn (KED)	207.583 ppb	
69Ga (KED)	2.775 ppb	
75As (KED)	0.372 ppb	
80Se (KED)	1.749 ppb	
85Rb (KED)	2.158 ppb	
88Sr (KED)	10.217 ppb	
107Ag (KED)	0.076 ppb	
114Cd (KED)	0.295 ppb	
133Cs (KED)	0.073 ppb	
138Ba (KED)	11.146 ppb	
139La (KED)	0.404 ppb	
140Ce (KED)	0.774 ppb	
141Pr (KED)	0.110 ppb	
142Nd (KED)	0.533 ppb	
152Sm (KED)	0.075 ppb	
153Eu (KED)	0.016 ppb	
158Gd (KED)	0.069 ppb	
164Dy (KED)	0.047 ppb	
165Ho (KED)	0.008 ppb	
166Er (KED)	0.025 ppb	
169Tm (KED)	0.003 ppb	
174Yb (KED)	0.020 ppb	
175Lu (KED)	0.003 ppb	
205Tl (KED)	0.010 ppb	
208Pb (KED)	0.864 ppb	
232Th (KED)	0.101 ppb	
238U (KED)	0.026 ppb	

Category	Concentration average	Intensity average	Intensity RSD
9Be (KED)	0.000 ppb	0 cps	
11B (KED)	6.079 ppb	413 cps	
23Na (KED)	724.517 ppb	997,873 cps	
24Mg (KED)	742.805 ppb	355,925 cps	
27Al (KED)	444.106 ppb	55,329 cps	
39K (KED)	4,897.239 ppb	1,350,789 cps	
40Ca (KED)	183.835 ppb	47,862,476 cps	

Category	Concentration average	Intensity average	Intensity RSD
51V (KED)	0.863 ppb	6,635 cps	
52Cr (KED)	1.204 ppb	14,458 cps	
55Mn (KED)	17.366 ppb	97,291 cps	
56Fe (KED)	377.407 ppb	4,128,321 cps	
58Ni (KED)	1.839 ppb	30,808 cps	
59Co (KED)	0.236 ppb	5,611 cps	
63Cu (KED)	11.664 ppb	211,895 cps	
64Zn (KED)	207.583 ppb	908,665 cps	
69Ga (KED)	2.775 ppb	15,583 cps	
75As (KED)	0.372 ppb	510 cps	
80Se (KED)	1.749 ppb	1,760 cps	
85Rb (KED)	2.158 ppb	11,575 cps	
88Sr (KED)	10.217 ppb	73,536 cps	
107Ag (KED)	0.076 ppb	3,761 cps	
114Cd (KED)	0.295 ppb	5,421 cps	
133Cs (KED)	0.073 ppb	1,977 cps	
138Ba (KED)	11.146 ppb	399,485 cps	
139La (KED)	0.404 ppb	29,264 cps	
140Ce (KED)	0.774 ppb	77,604 cps	
141Pr (KED)	0.110 ppb	10,925 cps	
142Nd (KED)	0.533 ppb	21,592 cps	
152Sm (KED)	0.075 ppb	3,000 cps	
153Eu (KED)	0.016 ppb	1,227 cps	
158Gd (KED)	0.069 ppb	3,707 cps	
164Dy (KED)	0.047 ppb	2,687 cps	
165Ho (KED)	0.008 ppb	1,760 cps	
166Er (KED)	0.025 ppb	1,877 cps	
169Tm (KED)	0.003 ppb	793 cps	
174Yb (KED)	0.020 ppb	1,730 cps	
175Lu (KED)	0.003 ppb	373 cps	
205Tl (KED)	0.010 ppb	1,760 cps	
208Pb (KED)	0.864 ppb	110,295 cps	
232Th (KED)	0.101 ppb	24,224 cps	
238U (KED)	0.026 ppb	7,552 cps	